

THE GLOBE



STUDENT VOICES AND VIEWS FOR THE SLCC COMMUNITY

FREE!

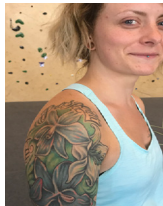
www.globeslcc.com

August 2017 | Fall '17 | Issue 01



President's Welcome

inside wrapper



Inked SLCC: Skin Deep?

Pages 20-21



Holding Court

Pages 15



PRSRPT STD
US POSTAGE
PAID
SLC UTAH
PERMIT No. 2771

Dear Students,



Welcome, to all of our new and returning students, as well as all of Salt Lake Community College's amazing staff and faculty. I hope everyone had a refreshing and wonderful summer!

Our more than 3,000 remarkable staff and faculty members are rested and

ready to engage and educate the thousands of students navigating our halls and beautiful campuses on their paths toward academic and career success.

One of the best ways to navigate your way through college is by making an appointment to access our excellent cache of advisors who empower students to become responsible architects of their own education. Our advisors can help you hone in on your career and academic goals and make sure you're on track with prerequisite classes. If you've declared a major, you can get help figuring out what classes you will need. And our advisors can help with career paths, academic standards, the right track for transferring to a four-year institution or how to access a career and technical program that accelerates your training and education more quickly toward meaningful employment. You can also email questions or

concerns to OnlineAdvisor@slcc.edu. With all of that help available, there's no reason you should feel lost or alone as you figure out how to make your college education work for you!

Once you're in your seat in the classroom, take a moment to consider that you are being educated by the best faculty around – many of whom are award winning, published in their areas of expertise or who have decades of experience working in the fields in which they are teaching. With relatively small class sizes – about 20 students on average – it means you have quick and easy one-on-one access with these incredible faculty members, who are eager to help you succeed in college and life.

We are ready to help! Have a great year, and we'll see you around campus.

Sincerely,

President Denece G. Huftalin

TRUE BRUIN WELCOME SLCC WELCOME DAYS RESOURCE FAIR

Welcome Days events introduce both new and returning students to each other and to campus! As a new semester dawns at Salt Lake Community College, be sure to look out for and participate in our Welcome Days events, designed to help students better engage and connect to the SLCC community. Welcome Days is an annual SLCC tradition that inspires a sense of belonging and Bruin pride, and students are encouraged to take part. Find your place, make friends, and share in the true Bruin experience! All students are invited to attend!

Welcome Days events include:

- Club Rush, organized by Student Life & Leadership
- Community Engagement Fairs from the Thyne Center for Service & Learning
- New Student Kick-off
- Resource Fairs
- Vendor Fairs
- "QuickStop" stations only at the Taylorsville-Redwood Campus, with convenient hours for any of your last minute questions, ready to assist in course planning and registration.

Find more information including dates, locations, and times on all Welcome Days events online at the Welcome Days webpage: www.slcc.edu/welcome

Be sure to attend the New Student Kick-off hosted on Wednesday, August 16, 4 p.m. – 7 p.m. at the Taylorsville Redwood Campus, Student Event

Center. SLCC welcomes new students and your families to the College. The New Student Kick-off gives new students a vital opportunity to learn about SLCC, and is designed to empower students with the knowledge and tools recommended to succeed at SLCC. Meet other students, connect with faculty and staff, learn about campus services and resources, and discover opportunities to get involved outside the classroom. Further college success breakout sessions aim to help new students transition to college life. Overall the New Student Kick-off will be a great event that will help students make the most of their first year, and kick-off their college experience!

Only at the New Student Kick-off:

- Connect with SLCC faculty, staff and other new students
- Attend educational workshops on Financing your College Career, Finding Jobs on Campus, and resources in exploring and identifying a different majors & careers.
- Discover the services, resources and perks available to you as an SLCC Bruin!
- Get helpful tips & hints from faculty and current students to ensure your college success.
- Enjoy free food & win door prizes!
- Receive your Student ID Card (OneCard)

Sign-up online to reserve yourself a spot for the "New Student Kick-off!" at the Welcome Days webpage: www.slcc.edu/welcome

SLCC offers many student services at **multiple** campuses

Submitted by the North and South Region Student Services

Salt Lake Community College offers a variety of student services at campuses and sites throughout Salt Lake County.

- Academic/Career Advising
- Admissions
- Book Store
- Career and Student Employment
- Cashiering/Tuition Payments
- Computer Labs
- Courtesy/Information Desk
- Disability Resource Center
- Enrollment Services/Data Center
- Financial Aid/Scholarships
- Learning Center/Tutoring
- Library/Media
- OneCard
- Orientation
- Parking
- Student Life and Leadership
- Testing (Jordan, South City & West Valley Only)
- Transcripts
- UTA Pass Activation

JORDAN CAMPUS STUDENT SERVICES

3491 West Wights Fort Rd. (9000 S), West Jordan
High Tech Center (HTC), Room 101
Contact Us: 801-957-2680

LIBRARY SQUARE STUDENT SERVICES

231 East 400 South, Salt Lake City
Garden Level, Room 004
Contact Us: 801-957-2002

SOUTH CITY STUDENT SERVICES

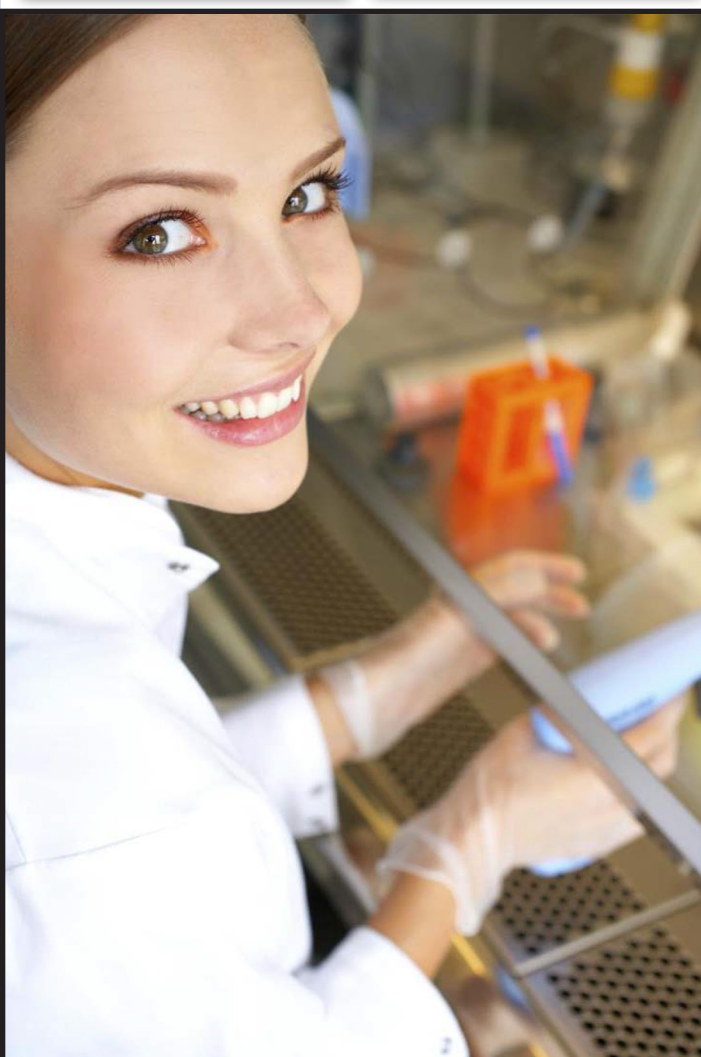
1575 South State, Salt Lake City
SCM Room 1-061 F-R
Contact us: 801-957-3350

MILLER CAMPUS STUDENT SERVICES

9750 South 300 West, Sandy
Miller Free Enterprise Center, Room 138
Contact Us: 801-957-5417

WEST VALLEY CENTER STUDENT SERVICES

3460 South 5600 West, West Valley City
Lobby
Contact us: 801-957-3350



Want more lab experience?

Check out...

Biotechnology @ SLCC

- Hands-on, practical education
- Well-equipped labs, capped at 16 students per class
- Two internship programs, or get credit for a paid lab job
- Full articulation with UVU – get a BS on SLCC's Jordan campus!
- 100s of new Utah biotech jobs expected in the next 2 years

www.slcc.edu/biotech
801-957-6336



Save a life. Be a hero.



New plasma donors
earn up to
\$250
in just 4 donations.

Learn more at
grifolsplasma.com

*Expires 12/31/2017. In addition to meeting the donation center criteria, you must provide a valid photo I.D., proof of your current address and your Social Security or immigration card to donate. Must be 18 years of age or older to donate.

Visit one of our three area locations.

Biomat USA
727 E 9400 South
Sandy, UT 84094
(801) 566-2534

Biomat USA
630 West North Temple
Salt Lake City, UT 84116
(801) 531-1279

Biomat USA
38 E 800 South
Salt Lake City, UT 84111
(801) 363-7697

**Bring this at your
first donation
to receive a
\$20 bonus.***

GRIFOLS

Pride for Donors. Passion for Patients.

THE GLOBE



STUDENT VOICES AND VIEWS FOR THE SLCC COMMUNITY



Know it all!

How-to guide for new students, Pg. 4-6

Having Fun

How students spent summer, Pg. 8

Master your OneCard

New school ID, Pg. 12

Harder, Better, Stronger

Campus construction at Redwood, Pg. 28

Letter From the Editor



You hold a copy of *The Globe*; Salt Lake Community College's one hundred percent student-produced newspaper. A large portion of the content in this Back-to-School issue was produced by the same students you sit in class with every day, and by god are we proud of it. Opposite this page is our list of staff and students, who work hard each week to produce interesting and informative content. You'll notice the layout on this next page is radically different from the rest of the paper. That was my choice.

This page is inspired by the graphic novel *The Nightly News*, by Jonathan Hickman, which centers around a group of terrorists dubbed "The Brotherhood of the Voice." Led by the enigmatic Hand of the Voice, the Brotherhood engages in a campaign of targeted ultraviolence against talking heads and public figures representing the American corporate media structure. It is by all accounts a bloodbath that, as of late, many in this country would seek to bring to life. Bully for them.

Why is an aspiring journalist into a novel so violently against his profession? Is it because I believe the novel's urging of a total corporate deconstruction grows more valuable by the day? Perhaps it's because I harbor resentment towards the world's chaotic situation, which is in direct contrast to the privilege and power I experience in more mundane ways? Maybe I just like the art style?

The point is, I chose to design the staff page in homage to my favorite comic book because I wanted to and I thought it was a cool idea. I've attended SLCC on and off since 2011, but when I've been serious about my education, I have worked with *The Globe*, rising through the ranks from writer to editor to Editor-in-Chief. I did it, and so can you! I made the choice as a student, to participate in and help run the newspaper. That's what *The Globe* is all about: student decisions.

The Globe's chief rule of content publishing is to try to avoid content that would be better covered by larger publications. But every SLCC campus, college event, and student is fair game; the greedy *Globe* wants to publish everything we can get our hands on. Do you have an opinion you want heard by your fellow students? For example, are you as a person and a SLCC student personally affected by the political climate? Or do you, like me, long to explain why said political climate is Bill Clinton's fault? *The Globe* accepts and is willing to publish all viewpoints that students feel are important. Drop us a line anytime at globe@slcc.edu, we want to feature students in all their glory.

The Globe aims above all to let the world know what SLCC students think.

We are Student Voices and Views for the SLCC Community.

Sincerely,
Jake Zaugg
Editor-in-Chief



The Globe Staff

EDITOR-IN-CHIEF

Jake Zaugg
zaugg.jake@gmail.com
[@zauggernut](https://twitter.com/zauggernut)

ASSISTANT EDITORS

Marc Hanson
Rex Magana

ASSIGNMENT EDITOR

Amelia Hansen
[@amelia_orate](https://twitter.com/amelia_orate)

ONLINE EDITOR

Tyler Price
tyler.price@slcc.edu

COPY EDITOR

globe@slcc.edu

STAFF WRITERS

Kyle Atkinson
Erin Sanders
Dean Steed

PHOTOGRAPHERS

Heather Robison
Matthew McPherson

LAYOUT DESIGNER

Kachina Choate

CARTOONIST

globe@slcc.edu

ADVISOR

Matt Merkel
matt.merkel@slcc.edu

ADVERTISING

Paul Kennard
801-581-7751
p.kennard@chronicle.utah.edu

COVER PHOTOS

Allison Hutto
Alison Arndt-Wild

Location

Center for Arts and Media
Room 1-054
1575 S. State Street
Salt Lake City, Utah 84115
Phone: 801-957-3066
Email: globe@slcc.edu
The Globe Online
www.globeslcc.com

The *Globe* is an open campus forum student newspaper published Wednesdays during Fall and Spring semesters (excluding holidays). The *Globe* is also online at globeslcc.com.

The *Globe* editors and staff are solely responsible for the newspaper's content. Funding comes from advertising revenues and some student fees administered by the Student Fees Board. For questions, comments or complaints, call (801) 957-3066 or visit globeslcc.com.

Follow us at:



globeslcc.com



facebook.com/slccsmc



[@GlobeSLCC](https://twitter.com/GlobeSLCC)



[@slccsmc](https://www.instagram.com/slccsmc)

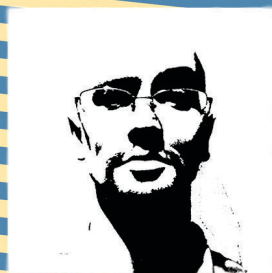


slcc.edu/smc

Throughout *The Nightly News*, Hickman makes a series of remarks that start innocently and quickly progress into bizarre non-sequiturs. The *Globe* promises that the following are only mostly true, that the people depicted aren't quite so unhinged, and that this all isn't just a cry for attention. Then again, this is a page of two truths and a lie.

Where The *Globe* Goes Down

The *Globe* Main Staff



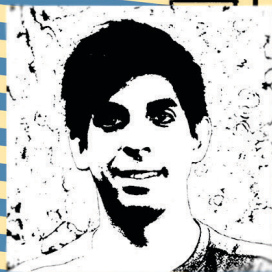
Jake Zaugg will fight anyone who says Picard is better than Kirk. He started going bald at 14, and hasn't slept, ever.



Amelia Hansen's childhood imaginary friend, a unicorn, was appointed the Nigerian ambassador and poached for her horn. She hates coffee.



Marc Hanson was born with eleven toes, and lost one. He enjoys writing, satanic metal, and violently attacking the homeless of Salt Lake City.



Rex Magana had an attic-hobo infestation, was electrocuted in Mexico, and fears his student loan advisor has purchased a bullet with his name on it.

The Back to School issue is funded via Student Fees, so this issue could not be produced without your help. Thank you. The *Globe* formally thanks Alison Arndt-Wild, Matt Merkel, and Kachina Choate, for their help in this issue, and for all their hard work on campus. The *Globe's* thanks are appreciated, but what Alison, Matt, and Kachina respectively really want is a world without Wilde, a cigarette, and some peace and quiet.

Comm 1130 Students, Summer Semester



Alexis Ahlzadeh is a first generation college student, an avid rock climber, and spends her time on the peaks pretending to lord over the valleys below.



Marcos Aragon has appeared on ESPN, speaks three languages, and if you ask nicely, will show you how to clap with one hand.



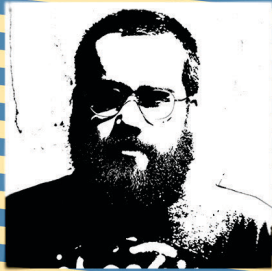
Terann Edwards plays the mandolin, can't digest wheat protein, and paid good money for someone to mess around in her chest cavity.



Jaimelee Eldridge has lived in New York, met Nicole Kidman, and appeared on screen with 24 actor Aaron Pierce.



Tina Huynh has gotten her tears on Beyonce, prefers dinner to breakfast, and runs a mean one-woman show of *The Avengers*.



Matt McPherson is from Indiana, and as a cat person, was born with his beard.



The one thing Elizabeth Robbins wants more than Spotify Premium is Amazonian alligator meat, and will return to the Hunt when her Portuguese lessons are done.



Jiaxi Yu speaks three languages, and came to the U.S. as an international student secretly hoping to be the next Derek Jeter.

WELCOME TO SALT LAKE COMMUNITY COLLEGE!

>> Fall Semester Begins Wednesday, August 23 Are You Ready? <<

Whether you are a new student or a returning Bruin, check out the following resources to help you be successful.

Student Services Rush Hours

To serve you better and for your convenience, the following offices on the Taylorsville Redwood, South City and Jordan campuses have extended hours at the start of the new semester.

- Academic Advising
- Admissions
- Bookstore
- Cashiering
- Courtesy Desk
- Disability Resource Center
- Financial Aid
- First Year Experience
- One Card
- Registrars Office
- Testing

Office hours for these departments are:

Friday, August 18: 7 a.m. – 7 p.m.

Saturday, August 19: 9 a.m. – 1 p.m.

Monday, August 21 through Friday, August 25: 7 a.m. – 7 p.m.

REGISTRATION DEADLINE FOR FALL 2017



Know the important deadlines for adding and dropping classes, tuition deadlines, and the last day to withdraw from classes. (slcc.edu/academiccalendar).

Event	Full Term 16-Week Aug 23– Dec 14	Part Term 2 1st Half 8-week Aug 23 – Oct 11	Part of Term 3 2nd Half 8-week Oct 16 – Dec 14
Classes Begin	August 23	August 23	October 16
Last Day to Add Classes	August 31	August 31	October 24
Tuition Due	September 6	September 6	October 17
Last Day to Drop Classes with 100% Refund	September 13	September 1	October 25
Last Day to Withdraw (No Refunds)	October 25	September 26	November 16

HOW TO PAY FOR TUITION

HAVE A PLAN FOR TUITION

Many types of financial aid are available to assist with college expenses including grants, loans, work study, and scholarships. Students apply for financial aid by completing the Free Application for Federal Student Aid (FAFSA) online: fafsa.ed.gov

SLCC students have access to scholarships offered by Financial Aid, various departments, and private off campus organizations. For more information visit slcc.edu/financialaid

Career and Student Employment Services has listings for hundreds of work study and on and off campus part-time jobs: slcc.edu/seces/index.aspx

SLCC Promise - SLCC Promise helps eligible, full-time students pay for their education by covering the cost of tuition and fees when federal grants fall short. For more information, go to slcc.edu/promise

Tuition Payment Plan (STIL) - Would you like the option to pay your tuition in four installments rather than all at once? Check out the Semester Tuition Installment Loan (STIL). Forms are available online at slcc.edu/cashiering/forms.asp or at Cashier Services. For more details call 801-957-4073. The first payment is due and must be made when submitting your STIL application. The remaining balance is due in equal monthly installments until the balance is paid in full. Payments occur over a four-month period for fall and spring semesters and three months for the summer semester.

SLCC MOBILE APP BY ELLUCIAN GO:



Ellucian Go helps you stay connected to SLCC like never before. You'll have access to great features that make your campus experience more effective, more efficient, and more fun. And it's free!

GO ONLINE WITH MYSLCC

MySLCC

MySLCC is replacing MyPage as the official online gateway to all Salt Lake Community College services, and is now accessible at my.slcc.edu. This is where students will register for classes, receive Bruinmail, locate tuition balance, check on the status of financial aid awards, retrieve grades, access Canvas, and find out what's going on in class and throughout the College.

The new site has been given a radical new layout, and exhibits not only a cleaner feel, but has been streamlined to give the best experience to students and faculty. Your MySLCC homepage now includes your Bruinmail, a SLCC calendar, and a useful list of mobile-friendly options used by the College, such as Ellucian Go and Canvas.

To activate your MySLCC account, navigate to www.slcc.edu, hover over the My SLCC dropdown menu at the top of the screen, and select MySLCC. From there, select the "First Time Users" link just below the login field. Once you have set your username and password

you may then login to the secure login box to access your MySLCC. A Student Number, or S Number (S#) is required to set a MySLCC username and password.

If you do not have your Student ID Number, click "Retrieve Your Student Number," the second option below the login field. Type the required information into the next page, press submit, and your Student Number will appear.

The third option below the login field directs to a FAQ page about login issues, and is helpful to the digitally challenged. At the bottom of this page is also the contact information for SLCC's IT Service Desk, ready to assist with issues new and returning users may have.

Remember, only enter your personal information into these sites and these sites only. Always be very careful when entering personal information online, and be sure you have navigated to the right site.

WELCOME TO SALT LAKE COMMUNITY COLLEGE!

BEFORE CLASSES BEGIN



Monitor the Wait List

Check your Bruin Mail daily. Students on the WAITLIST will be notified through Bruin Mail when an open seat is available. Once notification is sent, there is a 24-hour time limit to add the class. If you have questions call 801-957-4073.

Get Your Textbooks Early

You can purchase your textbooks at Taylorsville Redwood, South City, Jordan, Miller or West Valley (temporary store). In some cases, the textbooks sold at each site are specific to classes taught only at that campus. The College Store will work with you to help you purchase all of your texts at one location. Save time by ordering your textbooks online at bookstore.slcc.edu. You can have your textbooks shipped directly to your home OR you can reserve your books and pick them up in the College Store—all without having to wait in line! You can also rent your textbooks either online or in store. Check the College Store website or call 801-957-4045.

With the help of the SLCC Student body officers, the Salt Lake Community College Store is announcing NO SALES TAX on all computer hardware, software and accessories. This is a great savings and advantage offered only to SLCC students.

Student ID (OneCard)

After you have registered for classes, you can get your Student ID Card, also known as your OneCard. OneCard benefits include:

- * Free access to workout facilities at the Lifetime Activities Center
- * Free printing up to 50 free pages at any open lab
- * Free access to the library and computer labs
- * Free admission to SLCC athletic and other student events
- * Receive your refunds from the college faster and you can use it as a preloaded debit card for on and off-campus purchases

Get your OneCard at Taylorsville Redwood, South City, Miller, or Jordan campuses. Call 801-957-4073 for specific locations and hours of operation.

GETTING TO AND FROM CAMPUS



Parking

Parking permits are required on all SLCC Campuses. The Library Square Campus requires a special permit that is also valid on all other campuses - regular permits are NOT valid at Library Square.

To avoid parking tickets, visit the Information Desk, Cashier Services, or Parking Services to purchase your parking permit. Permits are \$20.00 per semester or \$40.00 for the year (Fall through Summer). Be sure to bring your car registration. If you drive more than one vehicle, bring all car registrations.

If you have questions about parking, call 801-957-4073 or check the Parking Services site at www.slcc.edu/parking.

Taking the bus or TRAX

Salt Lake Community College in partnership with UTA's Ed-Pass Program is providing its students an Ed-pass for use with TRAX and UTA buses. UTA offers a premium pass option at UTA's student discounted rate which can be used with Frontrunner as well as buses and TRAX. In order to be eligible for a pass, an individual must have a valid SLCC OneCard, and be an active registered student.

To purchase your bus pass, follow these steps:

1. Register for classes (for upcoming or current semester)
2. Buy your UTA pass online. Select SLCC from institution drop down list, choose from the list of available pass options (30-day, premium 30-day or semester, premium semester), purchase it then print out copy of receipt.
3. Go to any ID Center, show them your receipt, request your new OneCard (if you haven't got it already) and they will print you your OneCard and activate your bus pass at the same time!

If you already have your OneCard simply go online, purchase your pass, then go to any ID Center and have your OneCard activated!

For detailed information go to: slcc.edu/onecard/utaedpass.aspx

B-Line Intercampus Shuttle

SLCC provides all students, staff and faculty a free campus shuttle service. The B-Line buses connect South City, Meadowbrook and Taylorsville Redwood. Go to slcc.edu/b-line/index.aspx for detailed route information.

TIPS FOR THE FIRST DAY

>> ARRIVE EARLY.

Give yourself extra time to find a parking space. Campus parking is the most crowded during the first two weeks of the semester.

>> BRING A COPY OF YOUR CLASS SCHEDULE.

You can view and print your schedule online in MySLCC or better yet access it via the SLCC app (find it by searching for "Ellucian Go" on Google Play or the App Store).

>> CONFIRM WHERE YOUR CLASSES ARE LOCATED.

SLCC has multiple campuses. Your class schedule will include the campus location. Campus codes include: Community Writing Center (CWC), International Aviation Education Center (AP), Jordan Campus (JC), Library Square Center (LSC), Meadowbrook Campus (MBC), Miller Campus (LHM), South City Campus (SCC), Taylorsville Redwood Campus (RRC), West Valley Center (WVC), and Westpointe Center (WPC). Visit the home page and click on Maps to look up directions.

>> CLASS LOCATIONS MAY CHANGE.

If one of your classes has a location change, the updated information will be displayed on the door of the originally scheduled classroom. You may also visit Student Express or the Registrar's Office for assistance.

>> WAIT LIST.

At the start of the semester, if you are still on the wait list for a course, please attend the class anyway and discuss options with your instructor. Open seats may become available during the add period.

WELCOME TO SALT LAKE COMMUNITY COLLEGE!

ATTEND CLASS THE FIRST DAY OR LOSE YOUR SPOT!

1st
Day!

Your instructor has the option to administratively drop you in order to let other students enroll if you do not attend the first class session of a class that meets once a week, fail to attend at least one of the first two class sessions of any class that meets more than once per week, or fail to log into online classes within the first five days of the term.

If you are unable to attend the first class session(s) as required, you must inform the instructor or department office before the first day that you are not able to attend and do not want the class dropped. Instructor contact information can be found on your MySLCC on the MyCourses tab.

It is the student's responsibility to manage his/her schedule. If you decide that you do not want a class that you are enrolled in, you must drop it; do not assume that the instructor will drop you.

NEED HELP NAVIGATING THE TECHNOLOGY THAT'S REQUIRED?

The College offers a variety of technology services for students online. You can also get walk-in assistance at the IT Help Desk in Technology Building Room 216.

* **Computer Labs** — SLCC has over 150 labs with thousands of computers for you to use in either a classroom setting or in open use labs.

* **Free Apps** — SLCC has a system called AllAccess that allows students, staff, and faculty to run computer lab applications (like Word, PowerPoint, Excel, AutoCAD, MatLab, Maple, etc.) on personal devices for no cost, from anywhere there is an internet connection. AllAccess also allows files to be saved in "MyDocuments" folder for later use, allaccess.slcc.edu

* **Mobile App** — The Ellucian Go mobile app helps you stay connected to SLCC like never before. Check grades, class schedule, view campus maps and directions, find important phone numbers, the academic calendar and events all in one place — the SLCC mobile app (for both Apple and Android).

* **BruinMail/Google Apps** — SLCC has partnered with Google to provide all SLCC students with an SLCC Google account.

* The **eCampus Support Center** located in Technology Building Room 213 will help you with questions about **Canvas** slcc.edu/online.

THE FIRST THREE WEEKS ARE IMPORTANT



Need help getting the best start for success in your classes?

- * Seek assistance from your faculty member. Faculty are here to help you learn and succeed.
- * The Tutoring and Learning Center provides an array of free tutoring and learning support services to help you achieve academic success, slcc.edu/tutoring
- * The Student Writing Center helps you improve as a writer and succeed as a student. They offer free, in-person and online writing advising for all SLCC students enrolled in any class. They assist with analyzing writing situation, developing plans, and more technical aspects of writing such as organization, grammar and usage slcc.edu/swc.
- * The Math Lab provides tutoring support for all math classes, slcc.edu/math/mathlab.aspx.
- * The Science Resource Center provides assistance with the following subjects: Biology, Chemistry, Physics, Engineering, and Geosciences tutoring slcc.edu/tutoring/science-resource-center.aspx.

Academic Advising: What's in it for you?

The biggest myth about academic advising is that it is just about course selection. There is so much more to it! Many students need answers to specific questions about courses, schedules, and procedures, but advising can also help in a much broader way. You can work with an academic advisor to discover your interests, develop an educational plan, and clarify your life goals.

SLCC's Academic and Career Advising department can be a tremendous source of information, encouragement and support to you. You can schedule an appointment (during non-registration times) to see an advisor or visit on a walk-in basis.

Come prepared with questions, come in early and come often! Please visit the academic advising website at slcc.edu/academicadvising for a list of advisors and their program/major areas. You can call for an appointment or come to one of our locations:

Taylorsville Redwood	SC 240	801-957-4298
South City	1-061M	801-957-3361
Jordan	HTC 164A	801-957-2680
Miller	MFEC 126	801-957-5417

If you are unable to come into one of our locations feel free to contact our online advisor at OnlineAdvisor@slcc.edu

USEFUL PHONE NUMBERS

SLCC General Info 801-957-4073
Academic Advising 801-957-4978
Bookstore 801-957-4045
Cashier Services 801-957-4868
Disability Resource Center 801-957-4659
Financial Aid 801-957-4410
Lifetime Activity Center 801-957-3801
Health & Counseling 801-957-4268
International Services 801-957-4528
Jordan Campus 801-957-2600

Learning Center/Tutoring 801-957-6800
Miller Campus 801-957-5417
Parking Services 801-957-4011
Registrar's Office 801-957-4288
Residency 801-957-5044
SLCC Online 801-957-4406
South City Campus 801-957-3407
Student Employment 801-957-4014
Student Life & Leadership 801-957-4015
Testing Center 801-957-4500



The Globe is Hiring!

SLCC's student newspaper has
an immediate opening for

Layout Designer

Must be available
on Tuesdays

Desired Skills

Working knowledge of Adobe InDesign

Have taken or currently taking ART 1200

Basic understanding of Newspaper operations

Apply Today!

www.globeslcc.com/jobs

or call 801-957-3471

email alison.arndt@slcc.edu



SALT LAKE
CITY
ARTS
COUNCIL

TWILIGHT

2017 CONCERT SERIES

7.27 KURT VILE
AND THE VIOLATORS
+ WHITNEY

8.3 KAMASI WASHINGTON
+ ANTIBALAS

8.10 SOLANGE
+ KAYTRANADA

8.17 CAT DOWED
+ PHOEBE BRIDGERS

8.24 ANDREW BIRD
+ THE HANDSOME FAMILY

8.31 THE ROOTS
+ CHARLES BRADLEY &
HIS EXTRAORDINAIRES

THURSDAYS AT PIONEER PARK
DOORS 5PM /// MUSIC 6:30PM
TIX AVAILABLE AT 24TIX.COM

PRESENTED BY

Salt Lake
Community
College 

WWW.TWILIGHTCONCERTS.COM    **TICKETS @ 24TIX.COM**

SUMMER FUN AT SLCC

Students have been very busy this summer some of the activities they enjoyed are festivals, museums and music.



Photo by Allison Hutto



Photo by Alison Arndt-Wild



Photo by Alison Arndt-Wild



Photo by Alison Arndt-Wild

Holi
Festival of
Colors



Photo by Allison Hutto

SLCC Barefoot Fest



Photo by Jake Zaugg

Viking exhibit
at NHMU includes
a replica Viking
longship and rune
stones.



Photo by Jake Zaugg



Photo by Allison Hutto

Ogden's George S. Eccles
Dinosaur Park and Elizabeth
Dee Sahw Stewart Museum.



Photo by Marcos Aragon



Photo by Marcos Aragon

Wanderlust festival 148 explores
meditation and public art.



Photo by Alyssa Bokovoy

To read more about
these stories visit:
globeslcc.com



Photo by Alyssa Bokovoy

SACM leads with cutting edge programs

Submitted by The School of Arts, Communication and Media

The Salt Lake Community College School of Arts, Communication and Media (SACM) provides students with opportunities to express themselves and to inspire others.

With 17 different programs across two divisions, students can earn degrees or take general education courses in music, film, communication, journalism,



Photography student is at the mic in the RadioSLCC.com studio in the Center for Arts and Media (CAM).

performing arts, visual art and design, architecture, fashion design, and much more.

Through engaging general education, personal enrichment, and program specific courses, our dedicated faculty prepare students to succeed in rapidly expanding creative and technical fields, with the training and skills that match industry needs.

Students also learn vital soft skills, including critical thinking, project management, and collaboration, which are increasingly sought after by employers.

"We nourish students' passions. Through teamwork and collaboration, our courses emphasize hands-on, creative accomplishments," says Nick Burns, Associate Dean of Communication and Performing Arts. "Whether students want to pass their Gen Ed requirements, or learn specific art, media, or performance skills, this is the place."

Housed in the one-of-a-kind Center for Arts and Media (CAM) at the SLCC South City Campus, SACM classes utilize modern facilities and equipment to provide truly exceptional educational experiences. The CAM also hosts exciting events and programs, including lectures, screenings, art exhibits, concerts, performances, and theatre productions at the historic Grand Theatre. Since 2015, the Center and Grand Theatre have also served as the largest Salt Lake City venue for the international Sundance Film Festival.

"Our school and programs continue to provide uniquely engaging instruction through dynamic

courses, amazing faculty, and enlightening events and activities," says Richard Scott, Dean of the School of Arts, Communication and Media. "We're excited to build on the momentum created by our instructors and students to solidify our campus as a vital hub for cutting-edge arts and education."

The Division of Communication and

Performing Arts

brings together degrees and courses that provide pathways for SLCC students to share their voices. Whether through filmmaking, songwriting, or journalism, students taking division classes learn crucial skills applicable to a wide range of careers.

"We help students learn media production skills and performance skills," says Burns. "Whatever a student's career or degree path, all of modern life is touched by media and performance."

With both general education and



The Dance Company performs an annual concert in The Grand Theatre.

degree-specific courses, the Division offers AA, AS, and AAS degrees in multiple disciplines. These include Communication Studies (public speaking, persuasion, interpersonal, intercultural, teamwork, conflict resolution and more), Media Studies and Journalism (radio, television, journalism, social media, visual communication and more), Film Production, Music Production, and the Performing Arts (dance, film, music and theater).

Each semester the Division offers nearly 600 sections of various courses, many also available online. These classes provide a strong foundation for further academic success, including articulation with regional colleges and universities. The division also champions hands-on learning in industry-standard facilities, including a three-camera television studio, film sound stage, music recording studio, radio station, *The Globe* newsroom and 23 video and audio edit suites. The division is also home to the

SLCC Student Media Center (SMC), which oversees students' hands-on experiences at *The Globe* student newspaper, RadioSLCC.com, and student produced television programs.

The Division of Visual Art & Design (VAD) offers Salt Lake Community College students AS and AAS degree programs in a variety of disciplines, including Visual Art, Architecture, Fashion Design, Interior Design, and Art History. With the option to specialize in a number of areas, SLCC Art and Design students receive the skills and training necessary to succeed in these rapidly expanding creative fields.

Housed in the state-of-the-art CAM at the South City Campus, as well as facilities at the Taylorsville Redwood and Library Square Campuses, VAD classes incorporate the latest technology and software so students can stay up to date with the changing demands of constantly evolving artistic fields. Interactive computer displays and traditional studio spaces allow for a truly hands-on approach to education, with instruction focused on both traditional and digital techniques.

With highly skilled faculty recognized throughout their industries, VAD programs uphold a well-earned reputation for quality and excellence. Whether going directly into the workforce or looking for opportunities to pursue further education, the Visual



Students get hands on experience in the CAM television studio in COMM 2250.

Art & Design division provides SLCC students with an engrossing academic experience.

In addition to the degree programs, students throughout SLCC can include some art in their schedules by taking fun and engaging general education courses that expand their artistic abilities, with topics including painting, photography, animation, and more. The division also offers one-year certificate programs for several different subjects.

"What I hear all the time," says Burns, "our studios—that is, our learning facilities—are the best in Utah, and students keep coming back to take more classes."



Carnitas ARE BACK



CARNITAS
STREET TACO PLATO



CARNITAS
LOADED FRIES



CARNITAS
COMBO BURRITO



Be inspired
AVAILABLE FOR A LIMITED TIME

TENDER BRAISED PORK

**2 for \$5 CARNITAS
COMBO BURRITOS**



Please present coupon upon ordering. One coupon per person per visit. Limit 1 offer per coupon. Prices may vary. Not valid with any other offer, discount or coupon. Customers pay all applicable sales tax. No cash value. Valid only at participating locations. Valid until 8/30/17.

**TACO
NIGHTS**

STARTING AT 3PM



**3 VALUE
TACOS**

\$1

PRICE, PARTICIPATION, AND HOURS MAY VARY.

NOW HIRING

APPLY AT
Jobs.UtahDelTaco.com

TRIO help forge pathways to success

Submitted by TRIO Programs

The TRIO Programs are a series of eight federal programs designed to help low income and first generation college students achieve success in spite of their backgrounds. Famous beneficiaries of the program include former New York Knicks center Patrick Ewing and actresses Viola Davis and Angela Bassett, who leveraged their inborn talent with the TRIO program to succeed against the odds.



Crissy Dixon, a member of the TRIO STEM program.

Salt Lake Community College hosts three TRIO Programs. Two programs – Student Support Services and STEM specialize in providing personalized attention and individualized academic planning with intentional services and activities to help you learn, graduate, transfer, and succeed in pursuing and completing your academic pathway.

All TRIO services are free to participants and based upon individual needs. Personalized education plans may include academic pathway planning, tutoring, internships and research opportunities, scholarships and assistance with applying for federal financial aid, leadership development and transfer planning.

If you are interested in applying, please check out our website slcc.edu/trio/index.aspx or come visit us on the Redwood Campus at CT 226 or SI 358B

“From choosing classes, to keeping me motivated, and helping me plan to transfer to a four year university, TRIO has been right there by my side!” Toni F

#TRIOWORKS!

Elegibility

- First-generation college student (neither parent received a four year degree by the time you turned 18)
- U. S. citizen or permanent resident
- Plan to graduate from SLCC and transfer to a four-year institution
- Meet federal low income guidelines
- Registered with SLCC's Disability Resource Center (must also be low income and/or first generation college student)
- STEM applicants must be pursuing a degree in Science, Technology, Engineering or Mathematics

“One of the most substantial things that I have gained from being a member of the TRIO program is that I now have a sense of community when previously I felt alone,” Jessica S.

TV Studio Production COMM 2250 Fall 2017

For more information contact matt.merkel@slcc.edu



Get in the loop, and get a **new OneCard** today

Terann Edwards

Contributing Writer

As of Spring 2017, Salt Lake Community College has introduced a new and improved official identification card for all students, faculty and staff.

This OneCard includes access to Bruin Bucks, acts as a valid student ID card, and as a UTA bus pass once activated. The Taylorsville Redwood, Jordan, Miller and South City campuses each have convenient locations for students to retrieve their new cards.

A OneCard helps make the school year a little more stress free, allowing students to easily reach the many resources offered by the college. Students may use their card at college bookstores, libraries, SLCC Quick Stops, computer labs and copy centers; the card also grants access to the Lifetime Activities Center and certain campus events. The new OneCard is also accepted anywhere MasterCard is, where the previous card fell under the Discover label.

If by chance a OneCard is lost or stolen, students should immediately report this so it may be deactivated. A replacement card will require a \$20 fee, though students with the previous cards applying for new ones will not be required to pay this. 'Old' OneCards will not be reactivated.



"I am so glad I got the card," says SLCC student McKenzie Cole, "My classes are not all at one location, and it was nice to have the OneCard desks at the campuses I was at. I also love going to restaurants that include discounts if I am a student and I can just show them my card. I am just really grateful that they make it so simple to get it because I have a very busy schedule. Especially when I go

to buy my books at the bookstore."

Students and staff with the new cards can manage their account, view their transaction history, pay their bills online, and

adjust alert settings at the My Money Network site. For more information on the OneCard, visit a OneCard center on campus or visit SLCC's website.



DOWNTOWN SALT LAKE CITY | COTTONWOOD HEIGHTS | SOUTH JORDAN



Are you a fun, hard-working, outgoing person that loves to work with a team?

THEN YOU'RE THE PERFECT FIT FOR THE MARKET STREET GRILL FAMILY!

We're looking for motivated **servers** and **cooks** to join one of the oldest, most successful restaurant groups in Utah. We provide our employees with excellent wages, outstanding benefits, and employee discounts.



SERVERS

- 1 YR of high volume upscale tray service preferred, but training can be provided for outstanding candidates
- Must stand for entirety of shift
- Lift a minimum of 30 pounds
- Must be able to move quickly & handle stress with grace
- Maintain a professional appearance & impeccable personal hygiene



COOKS

- 1-2 YRS of high volume cooking experience
- Cook fresh fish, seafood, and other outstanding high quality ingredients

Applications are gladly accepted for all positions. Apply with your resume today!

YOU MAY ALSO VISIT THE EMPLOYMENT SECTION OF **WWW.GINC.COM** AND SUBMIT YOUR RESUME. QUESTIONS CAN BE DIRECTED TO **CATHERINE@GINC.COM** OR **801-239-2432**.

BRUIN BASH IS COMING!

**FUN
FOOD
GAMES
COMEDIAN
HYPNOTIST**



AUG 31 : 5 PM
.....
TAYLORSVILLE REDWOOD CAMPUS

Brought to you by:
SLCCSA

SLCC - SL&L
MAY REMAIN POSTED TO:
JULY 31

SLCCSA
SLCC STUDENT ASSOCIATION

Individuals who require ADA
accommodations call
(801) 957-4439

Salt Lake
Community
College 
www.slcc.edu/sll

\$5 Yoga Classes

Find your Inner Peace

Saturdays 11:00am-12:00pm

Space is limited. Reserve your spot today!



Image: "Yoga, double exposure" by Victor Ionides

HEALING MOUNTAIN[®]
MASSAGE SCHOOL

Day Spa & Student Clinic

Relax & Unwind

50 min. Swedish Massage Pricing

Student Practitioner \$30

Advanced Student \$35

Licensed Massage Therapist \$40

Customized Healing

NEW 80 min. Integrative Session

Holistic Health Practitioner \$50 intro rate

Each session is tailored to your needs, focusing on your health goals offering more advanced bodywork & techniques alongside holistic wellness & nutrition.

801.355.6300

Call or book online today!

www.healingmountain.edu

363 S. 500 E., Suite 210, SLC

Men's Soccer set to **kick-off** new season

Marcos Aragon

Contributing Writer

The inaugural season for the Salt Lake Community College Bruins Men's soccer team was a huge success for both the program and the school.

The Bruins finished the 2016 season as regular season champions with a record of 13-2-2 overall, and 10-1-2 in the Scenic West Athletic Conference. SLCC's only conference loss came in an overtime shootout against the Snow College Badgers in the Region 18 tournament.

The Bruins' coaching staff and players received both awards and national recognition after the team completed its first season in school history. SLCC head coach Mark Davis earned a Southwest Athletic Conference (SWAC) Coach of the Year honors. Meanwhile the Bruins ranked nationally in the National Junior College Athletic Association (NJCAA) poll.

SLCC Athletic Director Kevin Dustin is excited about where the program's future is headed. "One of the things Coach Davis and I talked about afterwards," Dustin says, "was to really start to nail down the culture of the program and to make sure that not only is it a winning program on the field but it does all the other things to represent Salt Lake Community College: good in the classroom

and good in the community."

SLCC also looks to remain at the top of the conference with a loaded sophomore class. Junior Estrada, the second leading scorer with eight goals, returns for his sophomore season after being named to First Team All-Region last season.

A two year school like SLCC must heavily rely on strong recruiting classes year in and year out in order to compete at the highest level against the rest of the conference.

"I know Coach Davis is very happy with his returning players," Dustin says, "but the key to how successful we'll be will be the new players."

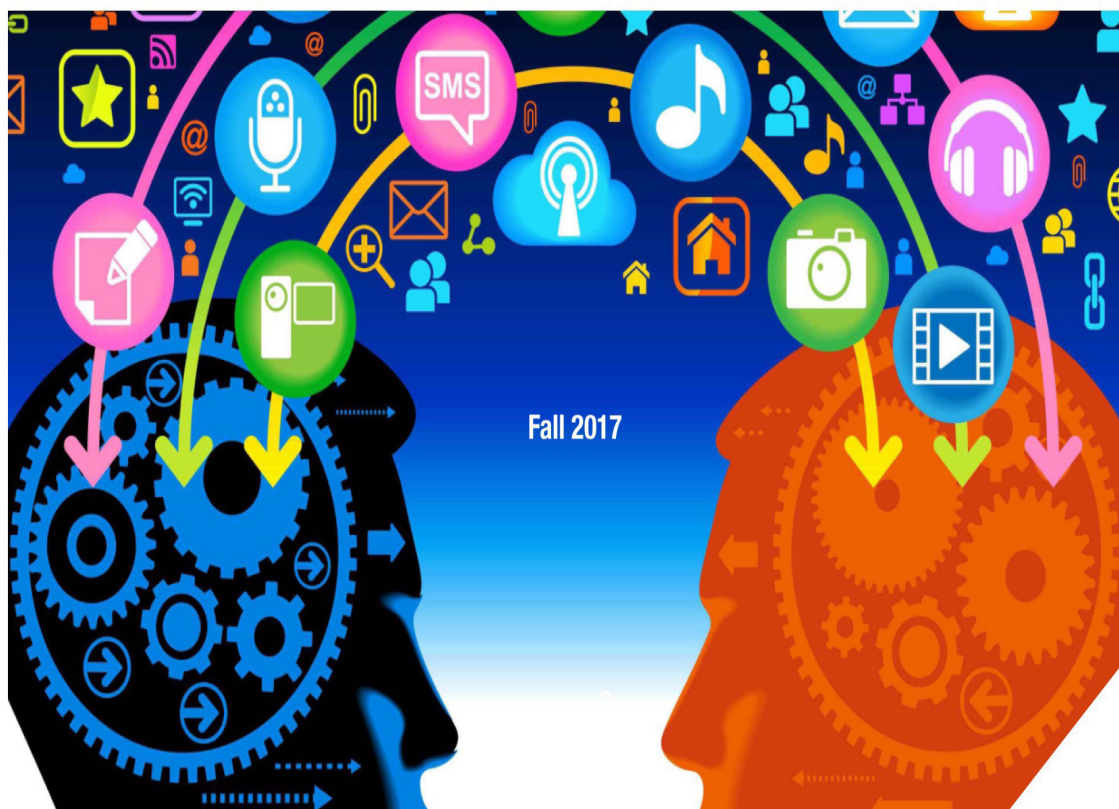
This year's incoming freshmen feature an exceptional blend of local and out-of-state players. "One thing I think is an advantage is that we do have a little more access to the players in the Salt Lake valley than they might in the other areas," Dustin adds.

Soccer was a club sport at SLCC in the past, but 2016 was the first year the NJCAA sanctioned the sport for men and women.

The Bruins begin the 2017 season with a scrimmage against Team USA, Thursday, Aug. 10 at the Taylorsville Redwood Campus. For more information visit slccbruins.com.

INTRO TO MASS COMM

COMM 1500 (Gen Ed)



Fall 2017

Bruin's Volleyball looks to serve up **competition**

Marcos Aragon

Contributing Writer

2016 was a year of excellence for the Salt Lake Community College Bruins Volleyball team, but they're coming back just as hungry in 2017.

The Bruins finished last season ranked fifth in the nation after going 5-1 in the postseason and winning the Region 18 Championship. Head coach Sue Dulaney was also awarded her first AVCA West Region Coach of the Year award.

The success of last season will not make the staff or team complacent as they look forward to the upcoming season.

"We have a target on our back this fall," Dulaney says. She however adds they are ready for the challenge.

Assistant Athletic Director Paul Marble, who evaluates every team year in and year out, expects this team to play at the same level as last year. "I think they will compete to win a region championship again," he says. "That's what we do."

The new Bruins' freshman class will join the team this season featuring a mix of exceptional players from all over the country along with some high-caliber local recruits. A talented core of sophomores also return from last season, including key players like To'a Faleao, and Aubrie Steiner, who coach Dulaney calls a "dynamic athlete."

Marble praises coach Dulaney and assistant coach Scott Keister on their ability to recruit skilled young players.

"They're going to be some high flying girls and they're gonna [sic] get up and do a nice job," he says.

The tournament was played on CSI's home court, where Dulaney acknowledged the importance of home court: "I would rather be surrounded by blue."

Three Bruins made the 2016 All-Tournament team, including Tournament MVP Andrea Brady.



Volleyball team at practice for the upcoming season on the Taylorsville Redwood Campus.

SLCC finished last season 27-8 overall and 8-2 in conference. They faced off against rival College of Southern Idaho (CSI), the reigning 2015 National Champion, in the Region 18 Final and were victorious.

Marble also acknowledged the Bruins' Region 18 performance last year over the CSI Golden Eagles.

"They've won like 10 titles right? Or 11, maybe. So to beat them, that's big time," he says. "Sue and Scotty have done a great job getting this program to a point now where [CSI] have to beat us, and that's a great spot to be in."

The Bruins open the 2017 season against University of Montana Western, Aug. 12 at the Lifetime Activities Center at Taylorsville Redwood Campus.



Learn Media Production Fall '17 Courses

**COMM 1130 -
Journalism & Media Writing**

**COMM 1500-
Intro. to Mass
Communication (ID)**

**COMM 1560-
Radio Performance &
Production (ID)**

**COMM 1800 -
Digital Media Tools &
Techniques**

**COMM 2200 -
TV/Video Production**

**COMM 2250 -
TV Studio Production**

**COMM 2570 -
Visual Communication (FA)**

Media Studies and Journalism
Communication Department

For more information go to slcc.edu/communication



Club Rush **connects** students with mutual interests

Elizabeth Robbins

Contributing Writer



Club Rush proves to be one of SLCC's most popular semesterly events at each campus.

This fall the Salt Lake Community College Club Rush will be on the Jordan, South City, and Taylorsville Redwood campuses, offering students an opportunity to become involved.

The Club Rush will go

three days, one day at each campus. The Jordan Campus will host the event on Tuesday Sep 12, from 11 am-1 pm. This event will take place between the Jordan Health and Sciences building (JHS) and the High Tech Center (HTC).

Wednesday, Sep 13, from 11 am-1 pm students can check out clubs at the South City Campus. This event is indoor in the east entrance foyer and the Forum.

Finally, Club Rush at the Taylorsville Redwood Campus will be on Thursday, Sep 14, from 11 am-1 pm. It will be outside between the Student Center and the Administration Building.

Brandi Mair, Student Life and Leadership Coordinator over Clubs and Organizations explains, "It is a way for the clubs to recruit new members, but it is also a way for students who have not been involved to learn more about the clubs

on campus."

SLCC has more than 65 clubs, and all "are required to be at two of the three days."

All clubs will be at the Taylorsville Redwood Campus, and then each club can choose one of the other campuses to attend.

Any student can join any club, the only requirement is that they pay their dues. Clubs are required to charge dues as a source of funding.

For new students the First Year Experience Office will be represented at the South City and Jordan campuses in conjunction with the Club Rush. First Year Experience will have its own event at the Taylorsville Redwood Campus.

If you are unable to attend Club Rush you can access information about the available clubs at slccsync.com, an online portal. "Students use their MySLCC login to access the portals of all active clubs," says Mair.

There is also a list of club contacts at slcc.edu/sll/clubs-and-orgs/clubs-list.aspx.

If a student cannot find a club that interests them, they are welcome to start their own club. The requirements are that they need five other students and a fulltime faculty or staff member as an advisor.

"The Clubs and Organization Office is happy to help them throughout the process," says Mair.

There are advantages to belonging to a club. There are a few Club Leadership Scholarships. Students who serve as officers are eligible to apply or nominate another student.

"Studies all across the country show that students who are involved in things like clubs on campus tend to have higher GPA's and they retain at a much higher rate than students who just go to class," explains Mair.

For questions, contact the Student Life and Leadership Office. Leone Tunuufi is the Clubs and Organizations Vice President in the Student Association and can be reached at 801-957-4072.

STEM Learning Centers



Step Ahead.

Gain academic success, become an independent learner, and develop critical thinking and problem-solving skills.



- **FREE** for all SLCC students
- **Drop-in** tutoring and individual **appointments**
- **Student Resources:** textbooks, models, calculators, computers
- **SIX convenient locations!** Open early and late; some locations open on Saturdays
- **Math Workshops** led by faculty to prepare for exams
- **Tutoring for:** All Math, Biology, Chemistry, Physics, Statistics, Engineering, Computers and Java, Nursing, Accounting and *more*
- **Group study rooms** at most campuses

801-957-6800 | slcc.edu/tutoring

IMAGINE

AT THE UNIVERSITY OF UTAH



TRANSFERRING TO THE U HAS NEVER BEEN EASIER

TAKE ADVANTAGE OF CAMPUS VISITS FROM:

U Admissions Counselors • Transfer Center Advisors • Career Services Representatives
U Student Success Advocates • Diverse Transfer Student Program

OUR EXPANDED SERVICES AND PROGRAMS INCLUDE:

Childcare • Housing • Advising • Veteran Support Center • Transfer-specific Scholarships
Career Services • Tutoring • Learning Abroad

ATTEND AN UPCOMING U TRANSFER VISIT. LEARN MORE AT bit.ly/utvisits.

TRANSFER CENTER

Student Services Building, Room 450
uc@uc.utah.edu | 801.581.8146
advising.utah.edu/transfer

OFFICE OF ADMISSIONS

Welcome Center, Student Union Room 80
admissions@utah.edu | 801.581.8761
admissions.utah.edu



Offering support for LGBTQ+ students

Submitted by Elisa Stone, Professor

Salt Lake Community College is an equal opportunity institution providing education and employment opportunities without regard to race, color, gender, sexual orientation, religion, national origin, disability, age and/or veteran status. SLCC offers support to our LGBTQ+ students through the following web site: slcc.edu/lgbtq/

The mission of the SLCC LGBTQ+ Resources site is to enhance the quality of life of lesbian, gay, bisexual, transgender, queer, and questioning SLCC students, faculty, and staff in an environment that is welcoming, positive, and safe, by increasing the SLCC community's awareness, understanding, and inclusion of its lesbian, gay, bisexual, transgender, queer, and questioning members. We will achieve this mission by providing:

- Resources to LGBTQ+ students, staff, and faculty
- Resources to allies
- Education on the terminology, the history, and the current issues effecting the LGBTQ+ community
- Safe Zone training to faculty, staff, and student organizations

SLCC also has an LGBTQ+ student club. Rainbow Pride Club is a social support and educational group for sexual minorities & their allies. They are dedicated to promoting openness and equality, maintaining confidentiality, supporting diversity, serving the public, and furthering a positive image for the LGBTQ+ community. They have expanded to keep discussions going to improve inclusivity for all issues. To learn more, visit: orgsync.com/38129/chapter

Website: facebook.com/SLCCRainbowPride
Meeting Location: Taylorsville Redwood Campus, Student Center Basement, Parlor A, B or Senate Chambers

President Email: slcc.gsa@gmail.com
Advisor Name: Brandon Devlin
Advisor Email: brandon.devlin@slcc.edu

Advisor Phone: 801-957-4881

LGBTQ+ Ally is a program which identifies faculty and staff who will provide empathy, acceptance, support and resources for gay, lesbian, bisexual, transgender, intersex, and questioning students. LGBTQ+ Ally & Safe Zone symbol posted in an individual's workspace lets students and staff know they can go to that person for help, for advice, or to talk confidentiality with a person who will be supportive and accepting. This symbol also means that biased and offensive actions and comments will be addressed in an educational and informative manner. For Safe Zone, SLCC offers LGBTQ+ Awareness Training, and also Safe(r) Zone training. When a training is being offered, you can register as a participant through MySLCC. For more information, email SafeZone@slcc.edu or contact Elisa Stone, 801.957.4836, elisa.stone@slcc.edu

SLCC has an LGBTQ+ Committee comprised of administrators, faculty, staff, and students. This committee meets regularly to work towards creating an LGBTQ+ Resource Center and making our campus inclusive and welcoming for all LGBTQ+ students and their allies. For more information, contact Mary Keinz, Accessibility Advisor – Veterans, Disability Resource Center, STC 053B, 801.957.4659, mary.keinz@slcc.edu or Elisa Stone, Professor, English, AAB 170, 801.957.4836, elisa.stone@slcc.edu

Another great resource for LGBTQ+ questions and concerns is Shellie Jo Enscoe, Director, Office for Diversity and Multicultural Affairs, Student Involvement Center STC 236L, 801.957.4415, shellie.enscoe@slcc.edu



SLCC at the 2017 SLC Pride Parade.

Photo Courtesy of Elisa Stone

MEDICAL LABORATORY SCIENCE

801-581-7913

School of Medicine (SOM) 5R-472

MLSadvising@path.utah.edu

medicine.utah.edu/pathology/

medical-laboratory-science

Medical Laboratory Scientists work in a variety of settings where they play crucial roles in health care.

Graduates will generate vitally important data for identifying and treating infections, cancer, heart disease, diabetes, and many other health conditions.

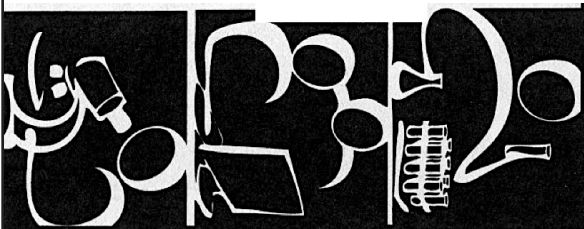
Enhance your professional interests!

Consider a degree in Medical Laboratory Science

Available programs:

BS in Medical Laboratory Science, Post-baccalaureate Certification,

MS in Laboratory Medicine & Biomedical Science





I CAN SHOW YOU A NEW PERSPECTIVE

DOUBLE MAJOR:
Journalism and Photography



*Expedition Unknown, SportsCenter and Game of Thrones**
available on XFINITY Stream app

With XFINITY, you can.

Find inspiration wherever life takes you. With the best in-home WiFi experience and access to millions of hotspots nationwide, you and your roommates can stay up to speed anytime, anywhere.

XFINITY Internet + TV

\$49⁹⁹

per month for 12 months

Download
speeds up to
55 Mbps

Includes **X1 DVR**
service and choice of
HBO® or **SHOWTIME®**
for 12 months

**No term
contract
required**

**Students, don't miss out on this great offer.
Go online or visit your local XFINITY Store today.**

xfinity.com/college | xfinitystores.com

xfinity
the future of awesome®

COMCAST

Offer ends 9/8/2017. Restrictions apply. Not available in all areas. New residential customers only. Limited to Internet Plus Choice with Limited Basic TV, Streampix, choice of HBO® or SHOWTIME®, and Performance Plus Internet service. Equipment, installation, taxes and fees, Broadcast TV Fee (up to \$7.00/mo.), Regional Sports Fee (up to \$5.00/mo.) and other applicable charges extra, and subject to change during and after the promo. Additional outlet service fee applies for multi-room viewing. Regular rates apply for additional premium(s) not included in Internet Plus Choice. After applicable promo, or if any service is cancelled or downgraded, regular rates apply. Comcast's monthly service charge for DVR Service is \$9.95/mo., HD Technology Fee is \$10.00/mo., Internet Plus Choice, ranges based on area, from \$67.95/mo. to \$72.95/mo. (subject to change). TV and Internet service limited to a single outlet. May not be combined with other offers. **TV:** Limited Basic Service subscription required to receive other levels of service. On Demand selections subject to charge indicated at time of purchase. Not all programming available in all areas. **Internet:** Actual speeds vary and are not guaranteed. **WiFi** claim based on XFINITY's fastest available download speed, router coverage and speed on 5 GHz band. **XFINITY WiFi** is included with XFINITY Internet tiers of 25 Mbps download speeds and above only. Not available in all areas. **XFINITY apps:** Standard data charges may apply. Check with your carrier. Call for restrictions and complete details. ©2017 Comcast. All rights reserved. HBO® and related channels and service marks are the property of Home Box Office, Inc. ESPN is a registered trademark of ESPN, Inc.

I Ink, Therefore I Am

Alexis Ahlzadeh

Contributing Writer



Emily Hope got inked to remind her of her father as well, the lilies and orchids representing his love of gardening.



Cait Hatzidakis, a Visual Design major, says the dream catcher behind her ear doesn't have any specific meaning.



McLean Cross realized his alcohol addiciton was leading down a dark path, and his tattoo reflects his decision to change his life.



Marcos Aragon also doesn't have any particular meaning to his tattoos, but was more than willing to show them off for The Globe

Students covered in art traverse the halls at Salt Lake Community College. Their ink is sometimes regretted, often meaningful, but always permanent.

SLCC student Rosie Bauman points to a tattoo on her ribcage. “It says ‘Now I know what love is in’ in Latin,” she explains. “I got it when I was I was two years sober and it was just about loving myself again, not other people.”

Emily Hope, another student, reveals a bouquet of flowers across her shoulder and upper arm, mentioning she “got it in 2007 for [her] dad.” The tattoo has his initials on one side.

“[The tattoo] says ‘perseverance’ and ‘prosperity’ because he always taught me those things – and he loves gardening, so I got lilies and orchids.”

While some students choose the sentimental route and value to their tattoos, others may possibly regret the decision. Alex Peace received a Versace logo on his chest, which depicts a woman’s face with a bloody nose.

“I could probably say it represents the American dream or something deep and metaphorical, but the reality is, I was just very drunk,” he laughs. “I don’t regret it, though. It reminds me of a time in my life when I was wild enough to get dumb tattoos!”

Tattoos seem to bring up memories of some experience for almost everyone who has them. Those like Peace can look back and laugh. Others are reminded of people who passed away or times they struggled in life.

McLean Cross tells about his tattoo of a coffin with a broken bottle of ‘booze’ in it. He got the tattoo before he decided to stop drinking, realizing alcohol was killing him. Now that he’s been sober for over five years, he still loves the tattoo. Although, he explains, “it’s not a place I’d ever want to be again.”

Cross then reveals another tattoo on his thigh of a dancing banana holding a heart, which he says represents his inner child.

Ariana Gonzalez-Weinstein, a SLCC student planning to pursue a doctorate in pharmaceuticals, was called Goose by her late Father, and it stuck, and “Goose” wanted to make sure something of her father was stuck on her as well.

“When I was a kid, we would visit my Grandma in Canada, who lived by a lake. I used to pick up snakes and tease my family with them, when they and the snakes were still lethargic in the mornings,” says Gonzalez-Weinstein, “and as an adult I found out snakes frequently hide in chrysanthemum bushes. After my Dad died in [the month of] November, I also found out chrysanthemums are the flower of November, and my sleeve came together in this weird way.”

Maggie Avila tells an interesting story about her experience getting the tattoo on her ankle, which is now barely visible.

“I got it in Bolivia, knowing the potential hazards that come with things like this in a developing country. The guy’s machine stopped working in the middle, so we had to stop so he could fix it and then finish my tattoo. It was all very sketchy,” she admits.

“My ankle was swollen for so long, it was scary. But luckily I had no real negative repercussions.” Avila tells her tale proudly.

Everyone has a story to tell, and many students have deemed their bodies the perfect blank canvas on which to tell theirs. Though the subjects may vary, students own their tattoos – whether done professionally or in someone’s basement; whether sad, reminiscent, or a dancing banana – tattoos symbolize chapters in students’ lives that the regular passerby may otherwise never know.



Ariana “Goose” Gonzalez-Weinstein got a sleeve on her left arm in honor of her father, but a heavy-handed artist caused the ink to bleed, darkening the skin permanently.

Share your tatoo with us on Twitter @slccsmc

Get hired in Avionics

Submitted by Aircraft Electronics Program

Salt Lake Community College's Aviation Maintenance Department is proud to announce that a new Avionics Program has been approved, and includes five related classes that will earn students a Certificate of Proficiency. Avionics, specifically defined as electronics work occurring on aircraft, is in high enough demand this program was approved even after SLCC shuttered the general Aviation program last semester. This program can work as a standalone set of classes, but also works extremely well as an addition to the Airframe and Powerplant program. Airlines like Delta, United, SkyWest, and many other aviation companies have a high demand for avionics-trained technicians, surely making this a winning program at SLCC.

Contact Shaun Anderson with SLCC Aviation Maintenance for details and any questions.

Shaun Anderson
Avionics & Aviation Maintenance Instructor
801-957-2057 Shaun.Anderson@slcc.edu

Todd M. Baird
Program Coordinator/Site administrator
801-957-2061

THE HEIGHTS IT REACHES ARE NOTHING COMPARED TO THE ONES YOU WILL.

IF YOU THINK YOU HAVE WHAT IT TAKES TO BE A MARINE CORPS OFFICER
FLYING CUTTING-EDGE AIRCRAFT LIKE THE MV-OSPREY, CONTACT YOUR
UNIVERSITY OF UTAH MARINE OFFICER SELECTION TEAM TODAY

CAPTAIN RYAN HIMMIGHOEFER

801-483-1146 • RYAN.HIMMIGHOEFER@MARINES.USMC.MIL
111 EAST BROADWAY SUITE 100 SALT LAKE CITY, UT 84111



MARINES.COM

THE GLOBE



WANTS YOU

SLCC'S STUDENT NEWSPAPER HAS OPENINGS FOR

STAFF WRITERS

EARN EXTRA MONEY WHILE BUILDING YOUR PORTFOLIO

APPLY TODAY!

WWW.GLOBESLCC.COM/JOBS
801-957-3471
ALISON.ARNDT@SLCC.EDU

Comprehensive career & employment services for students

Submitted by Career and Student Employment Services

Students can visit any of our offices for assistance with over 1000 available jobs posted with our department.

Our department offers comprehensive career and employment resources for Salt Lake Community College and School of Applied Technology students. Services are available to alumni for one year after graduation.

We host a fall and spring semester Job & Career Fair, with over 225 employers actively recruiting SLCC students at these events.

Student Employment Referrals & Individualized Job Search Assistance

Students visiting our office will take a few minutes to set up their employment account on MySLCC (this takes less than 5 minutes) once complete they can review all jobs categories or jobs specific to their academic major. When they have selected a job(s) they are interested in they will meet with a Career/Employment Advisor to review the position(s).

Workshops – Successful Job Search Strategies & Career Assessments

Students can take advantage career development workshops; these workshops have been designed to effectively assist students in developing professional job search tools, and include: professional resume, and cover letter development, job search and interviewing strategies. We also offer workshops to assist students in creating a positive, job ready social media presence using LinkedIn, Career E-Portfolio and other social media. We can assist undecided students with career assessments that will help them in determining their individual career pathway to success.

Earn Academic Credit for Work Experience through the Cooperative Education/Internship Course

STOP BY OUR OFFICE

No Appointment Necessary / Walk-Ins Welcome

Taylorsville Redwood Campus – Student Center 002 – 801-957-4014

South City Campus – 1-061R – 801-957-3047

Jordan Campus – HTC 110A – 801-957-6242

The office staff can answer questions on how students can earn academic credit for working, interning or volunteering in a position directly related to their academic major.

On-Campus Student Employment Program

Our office manages the “On-Campus Student Employment Grant” this program offers 30 to 40 part time on campus positions for qualified students (time limited, restrictions apply)

Additional On-Campus Employment

Students can get help navigating the SLCC Human Resources on-line application process for on-campus positions.

For Detailed Information & Additional Resources Visit Our Web Page at: slcc.edu/cses/find-a-job.aspx

The Globe is Hiring!

SLCC's student newspaper has
an immediate opening for

Layout Designer

Must be available
on Tuesdays

Desired Skills

Working knowledge of Adobe InDesign

Have taken or currently taking ART 1200

Basic understanding of Newspaper operations

Apply Today!

www.globeslcc.com/jobs

or call 801-957-3471

email alison.arndt@slcc.edu



Find the major, career and job you want!

Are you exploring majors or career options?

Would you like to network with professionals in your field of study?

Are you searching for employment?

The highly qualified team in Career and Student Employment Services is here to assist you with all things career related. Let us help you!

slcc.edu/cses • 801-957-4014

AA/EO INSTITUTION • 07.21.17

Bring your **child** to school day everyday at SLCC

Elizabeth Robbins

Contributing Writer

Child care is available at Salt Lake Community College on both the Taylorsville Redwood and South City campuses. Although the purpose of both sites is different, they offer parents a valuable service and a variety of choices.

The Taylorsville Redwood campus is home to the Eccles Early Childhood Development Lab School (Eccles Lab School). The South City Campus houses the Tim and Brenda Huval Child Care Center (TBH Center).

"The biggest difference between our two programs is that we (Eccles Lab School) are part of an instructional program and they (TBH Center) are a service for the students," says Sharlie Barber, manager of the Eccles Lab School.

This does not change who they care for. Shairylann Lisonbee, secretary and office manager at the TBH Center explains both facilities are open to the public, but students, faculty and staff get a reduced rate.

"If you are Pell Grant eligible, then we have a voucher which is a gift of money in addition to the lower rates for a student," says Lisonbee.

The TBH Center accepts infants as early as six weeks through five years old. The Eccles Lab School accepts children two to five years old.

TBH center has two types of contracts available, one that is year round and one that is based on the



Naptime in the Infant & Toddler room at the Tim and Brenda Huval Child Care (TBH) Center.

school calendar.

The Eccles Lab School follows the school calendar only; so non-student parents must find alternative care for their children during breaks and in between semesters.

Lisonbee, describes the TBH Center as having "enormous flexibility" for parents in regards to scheduling. A child can be cared for as little as one

day a week for half a day all the way up to full-time.

The calendar of the Eccles Lab School is school based and less fluid, with options of Monday-Wednesday-Friday, Tuesday-Thursday, or five days a week. They do offer morning or afternoon sessions within these options.

The Eccles Lab School has the option of extended hours from 6:45 a.m. - 8:30 p.m. The TBH Center is open daily Monday - Friday from 7:30 a.m. - 5:30 p.m.

One plus of the instruction based Eccles Lab School is that there are often more adults in the classroom. "We have teachers assigned to each classroom that are paid staff," says Barber. "In addition to the two paid people, there are students that come in once a week for two hours."



Lunch time in the 2-3-year-old classroom at the TBH Center.

Both are licensed day cares, but the Redwood Lab is accredited. The South City Center is working on accreditation and should have this within a year. The standard for accreditation is higher than governmental licensing.

Parents who are interested in applying should do so as soon as possible because both programs have wait lists

during the school year. There is a \$15 application fee. Applications are considered on a first come first served basis, with children needing full time care given priority.



SALT LAKE'S ORIGINAL BREWPUB

Featuring award winning fresh brewed beverages and a menu filled with pub favorites and eclectic daily specials. Serving lunch, dinner and weekend brunch. Private event space available.

Seasonal patio dining.

SQUATTERS. GOOD FOR WHAT ALES YOU!®
147 WEST BROADWAY | 801-363-2739 | WWW.SQUATTERS.COM

OER: An **affordable** alternative to textbook purchasing

Jamielee Eldridge

Contributing Writer

It's fall semester and students all over the country will face the same daunting task that they do at the start of every new semester. The schedule are thoughtfully planned out and enrollment locked in, but then the inevitable occurs: those expensive textbooks.

Procrastinators alike will grouse and grumble as they approach the check-out counter of the bookstore and reluctantly hand over an obscene amount of hard earned money (whether it be theirs or their parents) and hurry home to begin reading chapter one.

Before making this mistake, students can consider a different scenario. A scenario where classes require no textbooks, teachers have access to materials from scholarly publishers and students need not worry about those extra out-of-pocket expenses. This might all sound like something straight out of a science-fiction novel, but the truth is that it's not far off from this reality.

Open Educational Resources (OER) are freely available and openly licensed materials such as text, media and other digital assets. These resources reside in the public domain making them fully accessible to students for learning and research purposes and to teachers for a plethora of course materials.

Many of the teachers at Salt Lake Community College have already adopted this new method of conducting their classes and some have even gone to the extent of developing their own OER materials. The best part is that students can go online to obtain a list of classes that have embraced OER by visiting slcc.edu/open and selecting the current semester.

Even if a class does not appear on the OER schedule it's still smart to speak with an instructor before purchasing course materials. It's not uncommon that a syllabus might reflect incorrect information regarding which book to buy, the proper edition of the book, or perhaps the class has done away with a book altogether. The OER program is still fairly new, so contacting instructors about their use of it might help push this concept to be more widely accepted.

For the students that are required to buy a

textbook this semester it's important to be careful when making purchases.

"Some students get a textbook and open it before their first day of class," says Janalee Munro manager of the South City Campus bookstore. "I feel bad for the students that get into these situations because if they get the wrong book there is nothing we can do for them after they've used the book's access code. Some textbooks come with a scratch-off access code that allows you to view the book's material online."

Munro says the key is to not open a textbook

until the instructor confirms it's the right one. That way if the book needs to be returned, 100 percent will be refunded. The return policy is printed on the bookstore receipt.

Most importantly, Munro says that used textbooks during "buy-back week" (generally during finals week at the end of each semester) will be purchased for 50 percent of the most current cost of new books. Also, it will help stock SLCC's used book collection for other students looking for a less expensive bill at check-out.

Tim & Brenda Huval Child Care Center

Salt Lake Community College - South City Campus

1575 South State St, Room 1-188

Apply for Voucher

South City Campus Rm. 1-188

Monday through Friday

7:30 am - 5:30pm

Ages 0 and up

Full-time and Part-time Care

Contact us now:

holly.garcia@slcc.edu,

shairylann.lisonbee@slcc.edu

801-957-3070

Look for us on Facebook!

Tim & Brenda Huval Child Care Center



Two snacks and lunch provided.

AA/E O Institution

Child Care Financial Assistance for SLCC Students who Qualify

- Available for Any licensed child care on or off campus
- Maximum of \$700.00 per semester
- Must be PELL grant Eligible or prove economic hardship
- Amount based on credit hours/ hourly enrollment
- Visit: www.slcc.edu/childcare for Voucher Application

Salt Lake Community College
Step Ahead.

Do you have a news
tip or story idea?
TWEET US!



@GlobeSLCC

More than just books at the SLCC bookstores

Jamielee Eldridge

Contributing Writer

At Salt Lake Community College you have access to great teachers, reasonable tuitions and countless student activities and events, but don't be so quick to overlook one of the true gems of this establishment. The sweatpants.

Anyone who has visited a campus bookstore has seen the spectacular array of SLCC branded clothing, but how many have stopped to ponder how those swanky outfits got there?

"Some of the designs for our clothing are developed by students," says Charlotte Smith, bookstore Sponsored Student Desk accountant. "A panel of SLCC students actually presented at CamEx this year. The event is nationwide so these students presented to college bookstores around the country."

"[Bookstore staff] go to a trade show every year in the spring and it's a big trade show." Lori Safford South City campus bookstore Specialist remarks, "There are thousands of vendors for everything that can be sold in a bookstore: supplies, pens, pencils and clothing..."

The Campus Market Expo (CamEx) is produced by the National Association of College Stores (NACS) and spans over three days. Each year the show moves to a new location around the country and in March 2017 it was held at the Salt Palace Convention Center in Salt Lake City.

These trade shows are no small potatoes. College campus bookstores are part of a \$10 billion dollar industry. The NACS represents all of these stores which include nearly 4,000 campuses in the U.S. and Canada. CamEx alone attracts more than 2,000 attendees.

If clothing design for bookstores of higher education has suddenly sparked your interest then perhaps you should look into getting your start right here at SLCC.

"We are always looking for great designs," Smith mentions, "any input from students is always welcome at the bookstore."

To submit your ideas for SLCC merchandise you can e-mail Smith at charlotte.smith@slcc.edu

You never know, your design might be selected to appear on a new hoodie or



Kimberlee Pilling, a graphic communications major, seen here buying items that can only be bought at The College Store.

the back of a pair of sweatpants (which, by the way, the ladies of the South City Campus bookstore report they do in fact wear.)

"We love the stuff they bring in," says Safford, "Some of the sweatpants are really soft and really comfy... I buy sweatshirts, I buy hoodies, I buy the sweatpants and I even have a pair of shorts."

Safford's tip to students: the latest in SLCC fashion arrives toward the end of every summer, just in time for fall semester.

To see these getups in person you need only visit any of the SLCC bookstores located at Taylorsville Redwood, South City and Jordan Campuses or visit their website at bookstore.slcc.edu.

THE  DEPARTMENT OF THEATRE **2016-17 SEASON** 801-581-7100 | TICKETS.UTAH.EDU | 

SEPT 15-24, 2017
STEEL PIER

NOV 10-19, 2017
YOU NEVER CAN TELL

MAR 9-17, 2018
UP THE MAN IN THE FLYING CHAIR

OCT 20-29, 2017
LOVE'S LABOUR'S LOST

FEB 16-MAR 4, 2018
THE BEAUTIFUL GAME

APR 6-15, 2018
OUR COUNTRY'S GOOD

Are You Healthy? 18-55 Years Old?

Find Out if You Qualify for a Research Study at PRA



PRA Health Sciences

is currently seeking volunteers for a study of an investigational medication. You may qualify if you are:

- A healthy male or female
- 18-55 years old
- Available for 3 stays of 6 nights each, plus 21 follow-up visits

Call Today: 801-269-8200

Qualified study participants may receive compensation up to \$9,000. Even if you don't qualify, you could receive \$50 for referring a qualified participant.



PRAHEALTHSCIENCES

Salt Lake City, UT

Volunteers.PRAHS.com

Summer **construction**, roads, benches and buildings

Elizabeth Robbins

Contributing Writer & Photographer



An earthmover goes about it's work on the Taylorsville-Redwood campus.

The Facilities Services Division at Salt Lake Community College is working on a few projects at the Taylorsville Redwood campus. The most visible is the summer construction on the "quad," but parts of the Technology Building and Business Building will also be updated.

The renovations will provide a more comfortable and useable space for students and faculty. Construction will continue into the fall semester, but should not affect parking or classrooms.

Barton Mace, Director of Construction & Crafts explains the "quad" project as mainly having to do



Gone are the green fields, for now. Students can expect more amiable scenery in the future.

with landscaping: "We are upgrading the area to include more trees, sitting areas and space that is comfortable for students and staff to relax."

In the Technology Building, six classrooms and the main lobby will be updated.

"Basically," Mace says, "it will be an upgrade of classes to redo the finishes: floor finishes, wall finishes--new ceilings with LED high efficiency lighting and new AV equipment for projector and projector screens."

There are further plans to replace the single pane exterior windows in the Tech Building with more efficient windows. Construction will begin in fall, break for winter and resume in spring. Work hours will be primarily during the day and planned around class times to minimize noise.

Other miscellaneous improvements for the fall



Students are encouraged to take detours for safety's sake, even if it takes a moment longer.

and spring semester include new room ID and accessibility signage in both the Technology Building and Business Building as well as restroom updates in the the Business Building. The signage will give little to no disruption to students and staff, meanwhile the three restrooms under construction will be staggered so that one or more is always publicly available. The Facilities Services Mission Statement asserts: "Our mission is to foster an environment that is conducive to teaching and learning by providing an attractive, clean, safe and comfortable environment."

SLCC Libraries Locations + Hours

Jordan Campus

Phone: 801-957-6202
Health and Science Building
JHS 235
3500 W. Wights Fort Road
West Jordan, UT 84088

Mon - Thurs 7:30AM-8:00PM
Friday 7:30AM-4:00PM
Saturday 8:00AM-3:00PM

South City Campus

Phone: 801-957-3432
Main Building
Room 1-022
1575 South State Street
Salt Lake City, UT 84115

Mon - Thurs 7:30AM-10:00PM
Friday 7:30AM-4:30PM

Redwood Campus

Phone: 801-957-4610
Markosian Building
4600 South Redwood Road
Taylorsville, UT 84123

Mon - Thurs 7:30AM-MIDNIGHT
Friday 7:30AM-6:00PM
Saturday 9:30AM-6:00PM

Miller Campus

Phone: 801-957-5412
Miller Free Enterprise Center (MFEC)
Room 123
9750 S. 300 W.
Sandy, UT 84070

Mon - Thurs 8:00AM-8:00PM
Friday 9:00AM-1:00PM

SMÅSTARR
twin duvet cover set

\$ **19.99** /2pcs



Smart style on a college budget

We believe that college should be your time to be yourself, to try new things and express your point of view. Good thing you can do all that from the comfort of your room and you don't have to dip into your graduation money doing it!

Shop **IKEA Draper** or visit **IKEA-USA.com**



Responsible management of federal student aid

Rex Magna

Staff Writer

If you've recently asked for money from the government, knowing what to do with your federal financial aid after it's been handed out should be your top priority coming into this semester.

There are three types of aid under the heading of federal financial aid, sometimes known as FAFSA (which is technically a misnomer, as this just refers to the application itself). As of the publishing of this article, students are well past the deadlines for completing this application, so it is assumed readers will have already received some type of aid or are in the process of it.

The first type of federal aid is known as a Pell Grant. This type of aid is reserved for undergraduate students who would otherwise be unable to afford schooling due to outward circumstances. Pell grants are issued for the entire year; This means that recipients of the maximum amount of \$5,920 for the 2017-18 year will receive \$2,960 at the start of fall and spring semesters. Grants do not need to be paid back so long as all obligations are met; These include avoiding arrest, maintaining citizenship, keeping with academic standards, and paying off the second type of federal aid, known as a Stafford Loan.

Stafford Loans are categorized as subsidized and unsubsidized. The interest on a subsidized loan is paid for by the federal government while the borrower is enrolled in school or in deferment, a pause due to financial circumstances or other school related exceptions. Unsubsidized loans are simply loans offered by the government, but have smaller interest rates than corner stores offering 'quick cash now.'

Both types of loans come with the usual bells and whistles of creditors, the possibility of defaulting, accruing interest, and late nights worried about the future. As a point of fact the Federal Reserve estimates the outstanding U.S. student debt at 1.4 trillion dollars. This should not dissuade anyone from applying though; You can never be certain about receiving aid until you've filled out a form.

However there are simple ways to avoid the headaches and pitfalls of federal loans. Brandee Jacobsen, a financial aid advisor at Taylorsville Redwood campus, recommends returning extra or unused funds. If you still have the check, give it

directly to cashier services, or if the aid has not yet been disbursed there are options to choose smaller amounts. Jacobsen also recommends students be on a first name basis with their loan servicer.

"Students should be contacting them [their loan servicer] on a regular basis," says Jacobsen. She also recommends visiting the website of The National Student Loan Data System nslds.ed.gov to regularly check up on loan amounts. Jacobsen regularly helps students at the start of the year whose circumstances have changed and need to declare something new on their FAFSA. She and the many counselors at SLCC are ready to help students not leave college in debt.

The last form of aid is the work study program, which means getting a job through the college, which will then pay part of tuition. Students who have applied for work study will by now have had an interview and hopefully received a position. Working inside the campus can have its benefits too, as many times the jobs assigned will be related to the field the student is studying.

Whatever form of aid you choose, keep in mind the end goal: To leave college or university with little to no debt. Also remember that financial aid needs to be applied to every school year. Jacobsen offers a final piece of simple but effective advice: "When you apply for your taxes, apply for your aid," as the two deadlines are roughly the same.

Federal Student Aid
An OFFICE of the U.S. DEPARTMENT of EDUCATION

PROUD SPONSOR of
the AMERICAN MIND®

FAFSA®
Free Application for Federal Student Aid



Home



About Us



FSA ID



StudentAid.gov



Help

SEARCH

English | Español

Get help paying for college

Submit a Free Application for Federal Student Aid (FAFSA)



New to the FAFSA?

Start A New
FAFSA

Returning User?

- Make a correction
- Add a school
- View your Student Aid Report (SAR), and more...

Login

"Hi, my name is Sam and I worked for The Globe Newspaper. Thanks to the experience I gained working for The Globe, I now work for the fourth largest newspaper in the state of Connecticut!"



Are you a student looking not just for a job, but career experience as well? Work for SLCC's newspaper

THE GLOBE

Jobs range from editor in chief to graphic designers!

To inquire about positions and applications visit,
<http://www.globeslcc.com/jobs/>



Work from the Ground Up



FedEx Ground is currently hiring part-time package handler employees.

Start at the Ground and work your way up. All package handlers are eligible for multiple pay increases in the first six months! Full-time and flexible schedules available in specific locations.

North Salt Lake Hub
750 N. Franklin Pkwy (200 W.)
North Salt Lake, UT 84054
801-299-6512 or 801-299-6542

Why should you get in with Ground?

- Multiple pay increases in the first six months
- Flexible schedule: early and late shifts are available to accommodate your busy schedule
- Paid time off and health/dental benefits after requirements are met
- Promote from within philosophy
- Tuition Reimbursement Program
- Great opportunity to move up within the company
- Transfer opportunities so you can keep your job, wherever life may take you

Earn up to \$13.45/hr. to start

Think Fast.
Think FedEx Ground.

You must be 18 years of age to apply.

For more information, visit **GroundWarehouseJobs.fedex.com**

Student-Community engagement at SLCC

Submitted by Thayne Center

The Thayne Center for Service & Learning is Salt Lake Community College's bridge to the community at large. Whether you need a community partner for a service-learning class, or want to get more involved in the community, we will connect you with an excellent community partner.

The Thayne Center coordinates service leadership programs for students who are out to change the world. Learn, serve, and travel on an Alternative Break. Graduate with honors in Civically Engaged Scholars. Earn your Federal Work Study award mentoring youth, or working in the community with America Reads. Earn an AmeriCorps award on campus or in the community.

We envision a world in which people's basic needs are met and in which the values of equality and social justice are realized. We believe institutions of higher education have a responsibility to cultivate an engaged

“ Be anything but maybe.”
- Emma Lou Thayne



THAYNE CENTER
FOR SERVICE & LEARNING

AT SALT LAKE COMMUNITY COLLEGE

citizenry. We are therefore dedicated to empowering our students and faculty to realize they have the knowledge and skills to affect positive change in their community.

The Thayne Center is located in the Garden Level of the Student Center on the Taylorsville Redwood Campus (STC 020), and is open 8:00 a.m. - 4:30 p.m. Monday through Friday, but closed 10:00 a.m. - 12:00 p.m. on Wednesday for staff meetings. The Thayne Center also maintains a satellite office at the South City Campus (CAM 2-080), open every day except Wednesday from 9:00 a.m. - 4:00 p.m.

SLCC offering support for students with disabilities

Submitted by
Disability Resource Center

Under the Americans with Disabilities Act (ADA), all colleges and universities in the United States have the legal responsibility to foster inclusion of students with disabilities. To fulfill this opportunity Salt Lake Community College has established the Disability Resource Center (DRC) to provide services and accommodations for qualified students. The DRC also provides disability education and support to the college administration, faculty, and staff.

Students seeking services through the DRC may apply at the DRC office, disclose their disability, and provide appropriate documentation to support their request. However, the DRC cannot provide or pay for diagnostic evaluations and documentation which support student claims for accommodation. It is the responsibility of the student to provide any such required documentation to the DRC prior to receiving any services. If the student is found eligible, the DRC advisors work to ensure equal opportunity and access for the student's education.

Student accommodations are based on documented student need and are individualized for each class. DRC students meet regularly with their advisors to review their needs, assess their academic progress and register for classes. The DRC is the only department in the College which can make a determination of a student's eligibility for services under ADA. Faculty may not provide any accommodations to students without prior written authorization from the DRC.

Students with disabilities are invited to seek assistance and guidance at the DRC. For a comprehensive look at the DRC, visit them online at slcc.edu/drc. You can also contact the DRC at 801-957-4659.

DRC OFFICE LOCATIONS

Student Services area at the Taylorsville Redwood, South City, Jordan, Larry H. Miller, and the West Valley Center. DRC availability at all other campuses is by request.

PORCUPINE

PUB & GRILLE

LUNCH, DINNER, WEEKEND BRUNCH
\$2 TUESDAYS

(\$2 Select Microbrews)
"SWEET MONDAYS"
(Buy One Get One Dessert
with Purchase Of Entree)



University: 258 S. 1300 E. • PORCUPINEPUB.COM • (801) 582-5555

FINANCIAL SERVICES
that keep you

AHEAD

of the

CURVE

College can be stressful enough—you shouldn't worry about managing your money, too. Choosing America First, Utah's #1 credit union, can definitely help. We offer the best in convenience & cost-savings, including free checking, free mobile & online banking, low-rate loans and so much more.



americafirst.com •    

Federally insured by NCUA. Equal Opportunity Lender.

International students find welcome at SLCC

Submitted by International Student Affairs

Have you ever traveled to another country, spoken a different language, eaten a cuisine that you've never tasted before, or danced to music with a unique rhythm?

Each year hundreds of students travel to Utah to attend Salt Lake Community College. They enter the U.S. to get to know its diverse culture. In return, their presence creates opportunities for SLCC students, faculty and staff to broaden their knowledge and experience of today's global environment.

In the Fall of 2017, SLCC will serve almost 400 international students from 60 countries on our campus. SLCC welcomes international students seeking a rewarding educational experience in the United States.

International Student Affairs envisions an environment for International and U.S. students to become globally competent. We believe that community colleges, beyond any other postsecondary institutions, require an international dimension. Through education and co-curricular experiences, International Student Services supports a crucial dimension of global exposure to the

general student population, as well as to the faculty and staff.

There are many benefits to having international students on our campus and in our classrooms. The global perspective international students bring to our college is critical to the education of all students. Ninety-four percent of SLCC students are Utah residents. We recognize that students who grow up in one locale tend to have a singular vision about the world and more critically about the curriculum studied in class. International students bring an entirely different background and thinking to the classroom. The opinions shared by international students in and outside the classroom greatly enhance the education of all students. Hearing differing opinions provides unique learning opportunities that prepare all students to enter the global workforce.

In the 2014-2015 academic year the United States hosted 974,926 international students, with a net contribution of \$30.5 billion to the U.S. economy. Within Utah, 8,622 international students studied in higher education contributing \$202.6 million to our state economy.

Our campus is a window to the world as our students learn understanding from their international friendships. Realizing how rapidly we are becoming a true global village due to technological advances, students can develop friendships around the world. In the workplace, business leaders are making transactions in many languages. Political leaders need to know much more about the cultures and customs of the countries with which they maintain trade and diplomatic relations.

All of this is possible through education. The future belongs to those who truly undertake a mission of teaching the positive values of international relations, international trade, and intercultural communication. The need for increased international and intercultural understanding has never been greater.

TOP COUNTRIES SLCC INTERNATIONAL STUDENTS

1. Saudi Arabia
2. China
3. South Korea
4. Vietnam
5. Japan
6. Congo
7. Brazil

All members of the SLCC community are invited to get involved in international education. Opening your home to host an international student provides opportunities for students to adjust and learn about U.S. culture while helping to prepare American students to live and work in a global environment.

If you are interested in getting involved, you can:

- Host for the Holiday - Invite an international student to your home for a holiday celebration.
- Weekend Host - Share your favorite weekend activity with an international student.
- Day Host - Take an international student on a tour of the city, shopping at a yard sale, buying a car, going to the museum, library, volunteering at the community garden, food bank.

What's your hobby? Share your expertise. Share an adventure!

For more information about the international student at SLCC and how you can get involved, contact International Student Affairs at (801)957-4528 or international.services@slcc.edu. Visit us at slcc.edu/isa

MOST POPULAR FIELDS OF STUDY

1. Business, Business Management & Marketing Management
2. Engineering
3. General Studies
4. Accounting & Finance
5. English as a Second Language
6. Computer Science

Free writing advisors ready to aid students

Submitted by Writing Center

As a student, you can work with Writing Advisors in the Student Writing Center for any class and any writing assignment. Making an appointment is easy, students can either visit an in-person location or use the online system. Create an account at slccswc.org, click on In-Person Tutoring, and select the desired location. Currently, there are Student Writing Centers at the Taylorsville Redwood (AAB 129), South City (1-131), Miller (MATC 201), Jordan (HTC 102), Library Square (Garden Level), and West Valley (102) campuses.

Students can also call the individual writing center locations to schedule in-person appointments. Phone numbers can be found at slccswc.org, under the Visit Us tab.

The Student Writing Center also has online tutoring options:

- Talk Tutoring: Students also have the option to meet with a tutor on our website and have a text chat. Log into slccswc.org, click on the Online Tutoring tab, and select the "Talk with a tutor online" option. Please be aware that if this option is chosen, a tutor will be online at a specific time, somewhat like an

in-person meeting on campus. If you are late or do not show up, the tutor may leave the chat at their discretion.

- Written Feedback: Alternatively, students can submit writing to the SWC for direct written feedback. After tutors have completed the feedback, it will be posted to the submitter's SWC Online account, and the student will then receive a notification to sign into slccswc.org.

Both of these online options, along with the ability to ask a simple question of the SWC, can be accessed only after an account has been created at slccswc.org.

Do you have questions about grammar? Along with the "Ask a Question" feature of online tutoring, the SWC also maintains the SLCC Grammar Geek blog, located at slccswc.org/grammageek. Additionally, students can tweet questions to @slccgrammageek.

For students having trouble understanding assigned readings, visit the Academic Literacy Center (ALC), in TB 430 at Taylorsville Redwood Campus. The ALC can also help you with conversation, pronunciation, as well as feedback on oral presentations.



Students save 15% on travel year-round

Save on train travel to school, a visit
home or on a getaway with friends.

Visit [Amtrak.com/student](https://www.amtrak.com/student)



See where the train can take youSM

THIS OFFER IS EXCLUSIVELY AVAILABLE AT WWW.AMTRAK.COM AND AMTRAK'S MOBILE APP. THIS OFFER IS VALID FOR 15PCT OFF VALUE AND FLEXIBLE RAIL FARES. ADVANCE RESERVATIONS ARE REQUIRED A MINIMUM OF (3) DAYS PRIOR TO TRAVEL (INCLUDING UNRESERVED SERVICE). THIS OFFER IS VALID FOR STUDENTS AGES 13-25 YEARS OF AGE. THIS OFFER IS VALID FOR TRAVEL ON ALL AMTRAK SERVICE EXCEPT THE FOLLOWING: WEEKDAY ACELA EXPRESS (EXCEPT SELECT HOLIDAYS), AMTRAK/VIA RAIL SERVICE OPERATED BY VIA RAIL, AND SELECT THRUWAY SERVICE. UPON REQUEST PASSENGERS MUST PRESENT A VALID STUDENT IDENTIFICATION CARD ONBOARD THE TRAIN. NO PHOTOCOPIES OR FACSIMILES WILL BE ACCEPTED. SEATING IS LIMITED; SEATS MAY NOT BE AVAILABLE ON ALL DAYS. FARES ARE SUBJECT TO AVAILABILITY. THIS OFFER IS VALID FOR COACH SEATS; UPGRADE TO BUSINESS CLASS, FIRST CLASS, OR SLEEPERS ARE AVAILABLE UPON FULL PAYMENT OF ACCOMMODATION CHARGES. THIS OFFER IS NOT VALID FOR ONBOARD SALES. IN ADDITION TO THE DISCOUNT RESTRICTIONS; THIS OFFER IS ALSO SUBJECT TO ANY RESTRICTIONS, BLACKOUTS, AND REFUND RULES THAT APPLY TO THE TYPE OF FARE PURCHASED. FARES, ROUTES AND SCHEDULES ARE SUBJECT TO CHANGE WITHOUT NOTICE. ONCE TRAVEL HAS BEGUN; NO CHANGES TO THE ITINERARY ARE PERMITTED. THIS OFFER IS NOT COMBINABLE WITH ANY OTHER DISCOUNT OFFER. OTHER RESTRICTIONS MAY APPLY. AMTRAK, SEE WHERE THE TRAIN CAN TAKE YOU AND ACELA EXPRESS ARE REGISTERED SERVICE MARKS OF THE NATIONAL RAILROAD PASSENGER CORPORATION.



JOB POSTING

After School Group Leader

P/T 20hrs. a week Hourly: \$10

M-TH 2PM-6PM F 12:30PM-6PM



HAVE A JOB THAT MAKES A DIFFERENCE!

General Duties

After school Group leaders provide informal education support and supervision to a group of 10-15 students (grades: K-6 or 7-8).

The SLCSO After School group leader will be responsible for Homework Hall, developing interactive programming, Group Leaders are extremely important in helping to create a staff that is consistent and gives students a feeling of stability and safety.

Minimum Requirements

- 18+ years old
- High school diploma or equivalent.



How to Apply:

careers.slcschools.org

- click **apply for a career**
- under **vacancies** select: **community education**
- click **apply:** JobID 2202 After School Group Leader -Non Benefited

Please direct questions to:

Elisa Bridge

801-578-8311

elisa.bridge@slcschools.org



Planned Parenthood®

Care. No matter what.

1-800-230-PLAN

www.PPAU.org



We're here to help you plan your future.

Affordable birth control, STI testing, annual exams & more at our Salt Lake Valley health centers.

Salt Lake City
654 S. 900 E.

West Valley
1906 W. 3600 S.

South Jordan
1091 W. S. Jordan Pkwy, Suite 100

BRING THIS AD TO A CLINIC AND GET 10% OFF

STUDENTS FOR CHOICE

Interested in getting involved with reproductive justice on campus?

Join Students for Choice!

studentsforchoiceslcc@gmail.com

Work Study: A way to earn while you learn

Rex Magna

Contributing Writer

The premise for work study is simple; college students have tuition to pay, so the college gives them a job, and tries to relate it to the career the student is pursuing.

Work study is one of the three major programs offered under federal aid (the other two being grants and loans). Although the funds for work study come from the government, the college coordinates through hiring supervisors and financial aid advisors job placement, position and work hours.

Some jobs might offer higher hourly pay, but this difference can be somewhat misleading. In the school year 2017-18 the maximum pay a student can receive is \$5,920. This means that once students have earned that amount the employer has the choice to either terminate a student's employment or keep them on using their own funds. As such, higher pay rates may get you to the finish line quicker, but no further than that.

Work study is still employment and comes with associated ups and downs. Money is earned, but that money must go toward educational expenses. And while work study positions are offered through the school, mid-shift may not be the ideal time to catch up on homework assignments.

Work study allows students the opportunity to work on or off campus. On campus, students are

afforded opportunities to work side by side with administrators and teachers as well as getting helpful work experience to put on a resume.

Richard Daines is the Assistant Director for Public Services and regularly employs work study students with him at the Taylorsville Redwood campus library. Students work there in regular capacities and will do such tasks as checking in and out material, helping others find books or resources, and answering questions. A specific task Daines describes is shelf reading.

"Basically going through the shelves and making sure they're all in the correct order," says Daines of one of the more menial, but necessary tasks.

If library studies isn't interesting enough, Brandee Jacobsen, a financial aid advisor at Taylorsville Redwood, says working off campus has its own benefits.

"For example, SLCC students employed in the America Reads program are placed at nearby elementary schools, and work as literacy tutors to help struggling children learn to read better," says Jacobsen, who says that such positions are applied for through the Thayne Center.



Another benefit of work study is that it's meant to fit both a student's schedule and their long-term goals. On average and during a full class schedule, students will work from 10-20 hours a week.

"A lot of [work study students] are really good," says Daines. "That's why a lot of them move into regular jobs with us. Others, it's just a job for a year or two."

Work study is another thing to consider over federal loans, but should be discussed with financial advisors beforehand to check possible candidacy. For more information, visit fafsa.ed.gov, or a financial aid office at any SLCC campus.

Taking part in a research study is a win, win! You help others as well as yourself and you can line your pockets with a little cash.



We at Dermatology Research Center, Inc. conduct studies for all kinds of skin, hair, and nail conditions. Give us a call today at 801-269-0135 and find out what studies we have going. If you qualify, and participate payment is given.





GEOGRAPHERS GET JOBS!

WHAT CAN I DO WITH A DEGREE IN GEOGRAPHY?

- New emphases in Geography: Hazards, GIS, Population, Climate Change, & Remote Sensing make Geography graduates very marketable.
- Combined BS / MS degree in Geographic Information Science (GIS) allows first-year students to finish Bachelor's and Master's degrees in only 5 years.
- Geographers get jobs in the private sector, with state and federal agencies such as the U.S. Forest Service, the Bureau of Land Management, and the National Geospatial Intelligence Agency, or with conservation organizations like the Nature Conservancy.

**DATA FROM THE BUREAU OF LABOR INDICATE THAT THE
EMPLOYMENT OF GEOGRAPHIC INFORMATION SCIENTISTS
IS PROJECTED TO GROW 29% FROM 2014 TO 2024**

 **Department of Geography**
COLLEGE OF SOCIAL AND BEHAVIORAL SCIENCE
THE UNIVERSITY OF UTAH

<http://www.geog.utah.edu>

 **University of Utah Geography**

**You asked for it...
you got it!**



GLUTEN FREE PIES & PULL-APARTS

Now available at select Pie locations!



www.THEPIE.com

The Pie Delivery
275 S 1300 E SLC
Take-Out & Delivery Only
801-582-5700

The Pie South Jordan
10627 S Redwood Road, South Jordan
801-495-4095

The Pie Ogden
4300 Harrison Blvd., Ogden
801-627-1920

The Pie Midvale
7186 S Union Park Ave. Midvale
801-233-1999

The Pie Underground
1320 E 200 S SLC
Dine-In Only, 801-582-5700

Most students qualify for **funds** under SLCC Promise

Elizbeth Robbins

Contributing Writer

Salt Lake Community College is calling the inaugural year of the Promise Program a success. During the 2016-2017 school year, 770 students received SLCC funds to fill the gap between their Federal Pell Grant and their total tuition bill.

The Promise Program is intended to make tuition free for low income, full-time students who do not receive enough grant money to cover their entire tuition cost.

Eric Weber, Assistant Vice President of Student Enrollment Services explains how the program works, "Once the Pell Grant is applied to the tuition and fee balance, any shortage is covered by a tuition waiver."

The school redistributed merit based tuition waivers to fund this program.

For eligibility a student must be a Utah resident, qualify for a Federal Pell Grant, be a full-time student and have a 2-year degree plan. They must also maintain a 2.0 cumulative GPA, complete 70% of attempted courses and have taken less than 90 credits.

Weber goes on to explain that the students in the Promise Program were awarded "approximately \$1,070 per year on average."

Joy Tlou, Director of PR, states that approximately \$800,000 in support was awarded.

There is no separate application process and no cost to apply. A student simply has to complete the Free Application for Federal Student Aid (FAFSA). However, Utah is traditionally poor at completing the FAFSA.

The Utah System of Higher Education states on their website that "Utah continues to be last in the nation for percent of eligible students completing the FAFSA. In 2014-15, 70% of eligible Utah high school graduates did not complete a FAFSA, the highest among all states. Those students left \$45.2 million on the table in total unclaimed Pell Grants, which is free money for college."



SLCC is trying to improve on that statistic.

Cristi Millard, Financial Aid Director explains her office's efforts to help current and future students apply for federal aid, "Currently, SLCC offers 7 workshops per month to assist students in completing the FAFSA. These are held at the Taylorsville Redwood Campus, the South Campus and West Valley Center."

Millard also says, "We are working with other institutions of higher education within the state to increase completion of the FAFSA."

SLCC visited high schools for open house events through the Utah Higher Education Assistance Authority (UHEAA) to help students complete the application. In the 2016-17 year, SLCC completed more than half of the 70 workshops done statewide.

The deadline for applying for the FAFSA for the 2017-18 school year closed June 30. The open date to apply for the 2018-19 year is October 1, 2017. It is too soon to know if the number of students helped will increase in the coming year, but Millard expects that it will.

Eric Weber says that the future goal for the Promise Program is "to increase the number of students participating in the program and subsequently increase students with degree plans attending SLCC as a full-time student."

To find out more about the SLCC Promise Program, visit: slcc.edu/promise/.

The Office for Diversity and Multicultural Affairs

Experience an inclusive learning environment that promotes the college's values, advocates for equity, celebrates diversity, fosters respect, and elevates access, success and academic excellence.

Diversity and Multicultural Centers

Stop in, kick your shoes off and stay for a while. Visit either the Taylorsville Redwood or South City Campus to find computers, tutors, comfy lounge space, study groups, conversation hours, gatherings, socials and more.

Celebrating diversity means celebrating you!

Engage in authentic multicultural heritage and history months as well as equity, diversity and social justice events. Socialize, celebrate and/or march in our annual Multicultural Social, Multicultural Graduate Celebration and Utah Pride Parade.

Connect with a Multicultural Student Success Coordinator or Mentor

Supporting your success, SLCC faculty, staff and peer mentors offer culturally-responsive one-to-one and group mentoring, coaching and connection with support services and resources.

SLCC Inclusivity Committees

Let your voice be heard. Serve as a student representative or join us at one of the many SLCC inclusivity committees.

To learn more visit, us at:

Taylorsville Redwood Campus,
Student Center, STC236
South City Campus, SCM 1-140

slcc.edu/diversity

Salt Lake
Community
College



1875

MAKE YOUR NEXT MOVE YOUR BEST MOVE: TRANSFER TO WESTMINSTER



**WESTMINSTER
COLLEGE**

About 30% of our entering undergraduates are transfer students, which means you'll be part of our campus community right from the start.

801.832.2200 | [WESTMINSTERCOLLEGE.EDU/TRANSFER](https://www.westminstercollege.edu/transfer)