

THE GLOBE



STUDENT VOICES AND VIEWS FOR THE SLCC COMMUNITY

CENTER FOR ARTS AND MEDIA

2017
SUNDANCE
FILM
FESTIVAL

The
Grand
Theatre

Bruins Wreck Badgers

Sundance 2017

I Know You From Somewhere, Pg. 3

The Bruin Cupboard

Groceries and more for students, Pg. 6

Men's basketball triumphs in season opener, Pg. 4

What's Hip, Hot, and Happenin' on Campus

Wednesday
25
The Lost Type Co-Op Exhibition

When: 7:00 am - 10:00 pm
Where: SCC: Eccles Gallery

Welcome Days

When: 10:00 am - 12:30 pm
Where: WVC

Social Work Association Club Meeting

When: 11:30 pm - 12:30 pm
Where: SCC 1-147

Pre-Medical Professionals Club

When: 2:00 pm - 3:00 pm
Where: TRC: SI 290

Rainbow Pride Club

When: 3:30 pm - 4:30 pm
Where: TRC: SC, Den 2

Thursday
26
The Lost Type Co-Op Exhibition

When: 7:00 am - 10:00 pm
Where: SCC: Eccles Gallery

Weclome Days

When: 11:00 am - 1:30 pm
Where: TRC: Student Center

Presentation Skills Lab

When: 3:00 pm - 5:00 pm
Where: TRC: TB 304

Students for Choice - New Member Social

When: 7:30 pm - 9:00 pm
Where: TRC: SC 207

Friday
27
The Lost Type Co-Op Exhibition

When: 7:00 am - 10:00 pm
Where: SCC: Eccles Gallery

Club Resonance

When: 1:00 pm - 2:00 pm
Where: SCC: 2-138

Basketball Pick-Up Games

When: 5:00 pm - 7:00 pm
Where: TRC: LAC

Saturday
28
Them Winter Blues

When: 1:00 pm - 3:00 pm
Where: Library Square Writing Center

Monday
30
The Lost Type Co-Op Exhibition

When: 7:00 am - 10:00 pm
Where: SCC: Eccles Gallery

DECA Meeting

When: 12:00 pm - 1:00 pm
Where: TRC: BB 222

Psi Beta SLCC Chapter Meeting & Psychology Club

When: 3:00 am - 4:00 pm
Where: TRC: AAB 232

Belly Dance Club

When: 4:00 pm - 5:00 pm
Where: TRC: LAC Racquetball Courts

Tuesday
31
The Lost Type Co-Op Exhibition

When: 7:00 am - 10:00 pm
Where: SCC: Eccles Gallery

Student Art Showcase Poster Design Contest

When: 9:00 am - 12:00 pm
Where: SCC: 2-177

American Chemical Society Meeting

When: 12:00 pm - 1:00 pm
Where: TRC: SI 290

Culinary Arts & Pastry Club

When: 3:00 pm - 4:30 pm
Where: Miller Campus CAB



Pieces by Scotty Reifsnnyder in the Lost Type art gallery.

The Globe Staff

EDITOR-IN-CHIEF

Jake Zaugg
 zaugg.jake@gmail.com
 @zauggernut

ASSISTANT EDITORS

Marc Hanson

ASSIGNMENT EDITOR

Amelia Hansen
 @amelia_orate

ONLINE EDITOR

Jake Zaugg
 @zauggernut

COPY EDITOR

Kait Hatzidakis

STAFF WRITERS

Mike O'Donnell
 Rex Magana

PHOTOGRAPHERS

globe@slcc.edu

LAYOUT DESIGNER

Ivy Smith

CARTOONIST

globe@slcc.edu

ADVISOR

Matt Merkel
 matt.merkel@slcc.edu

ADVERTISING

Paul Kennard
 801-581-7751
 p.kennard@chronicle.utah.edu

COVER PHOTO

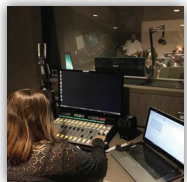
Ivy Smith

For more information on these events, please visit www.globeslcc.com/calendar

#lifeatslcc

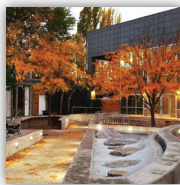
Instagram

contest



"Working up for the latest episode of SLCC Live @slccslcc #lifeatslcc"

Show us
 #lifeatslcc
 through the
 eyes of
 your camera.



"Campus is epic this time of year @slccslcc beautiful college"

Get your photo published
 in The Globe and win a prize.



"@slccslcc @Campus2016"



"Merkel and Taylor setting up for Express @slccslcc"

In the caption of your photo include @smc #lifeatslcc and hashtag the SLCC campus (#SouthCity, #Taylorsville Redwood etc.), or email contest.globe@slcc.edu

Follow us at:



globeslcc.com



facebook.com/slccsmc



[@GlobeSLCC](https://twitter.com/GlobeSLCC)



[@slccsmc](https://www.instagram.com/slccsmc)



slcc.edu/smc

Location

Center for Arts and Media
 Room 1-054
 1575 S. State Street
 Salt Lake City, Utah 84115
 Phone: 801-957-3066
 Email: globe@slcc.edu
 The Globe Online
www.globeslcc.com

The Globe is an open campus forum student newspaper published Wednesday during Fall and Spring Semester (excluding holidays). The Globe is also online at globeslcc.com.

The Globe editors and staff are solely responsible for the newspaper's content. Funding comes from advertising revenues and some student fees administered by the Student Fees Board. For questions, comments or complaints, call (801) 957-3066 or visit globeslcc.com.

Online harassment centerpiece of Sundance screening

Rex Magana

Staff Writer

Andrew Fitzgerald, who has worked on *Portlandia*, *Nathan for You*, and *Comedy Bang! Bang!*, visited the South City Campus to screen his most recent work, *I Know You From Somewhere*. The short film was attended by teachers and students alike and was followed by a Q&A with Fitzgerald.

Described as a dark comedy, the film premiered at Sundance and deals primarily with the world of online social justice and sensationalism, specifically concerning what happens after the fact; that is how the accused moves on after being made the ragdoll of comment sections and media talking heads.

The film stars Angela Trimbur as Katherene, a young, social media friendly woman skeptical of those who feel obliged to overtly express themselves. Her friend Olivia, played by Cleopatra Coleman, exemplifies this as she obsesses over taking pictures of both herself and her food.

Katherene finds Daniel (Colin Woodell), an imperfect yet sustainable boyfriend, through a dating

site. The pair are happy until she finds Daniel having an affair with Olivia. Katherene then invites both of them to dinner and confronts them. Someone then films the outburst, and the audio paints her as a terrible racist.

Katherene becomes an internet sensation and is subjected to personal harassment, moving the tone of the movie to a serious note as it examines the nature of online justice. What started on the web starts to affect her real life.

Whatever problems the movie raises, it offers no easy answers.

"It just gets worse," Fitzgerald says. When asked if political correctness is to blame, Fitzgerald expressed doubt. "It's difficult because you can't make blanket statements about things."

Although there might not be a clear answer, the questions asked are just as important. Associate Dean Nick Burns knew that and pushed students to ask more questions of Fitzgerald.

"This is a great opportunity," said Burns to the students, "you should take advantage of it."

The same goes for future events. With Sundance fully upon us, all students are advised to take advantage of new films. The Grand Theater at SCC has and is even partaking as a venue for Sundance films.

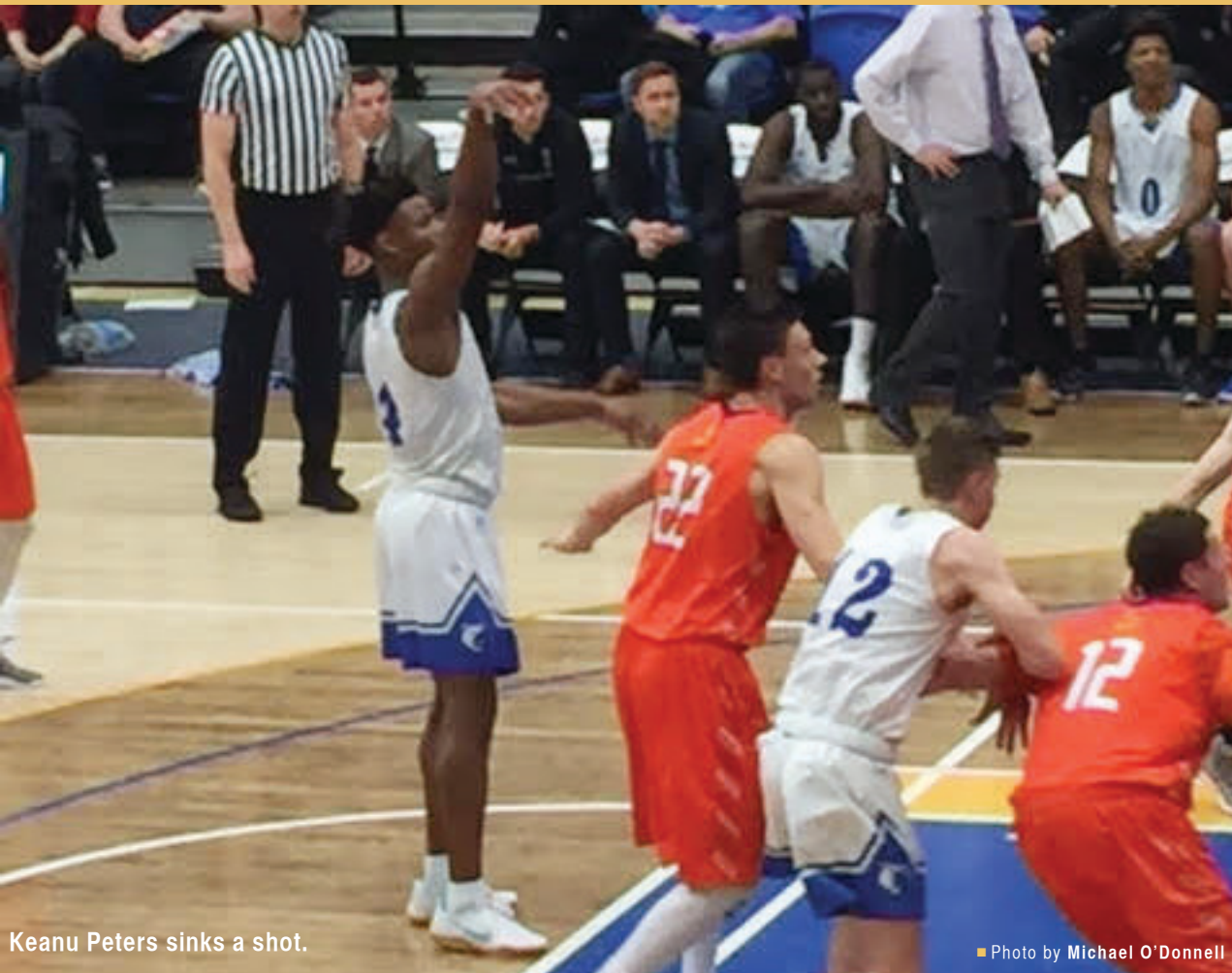
Although Fitzgerald plans to return to editing, he hopes to make a feature length film or to make more short films once he can afford it.

In the spirit of independent film, *I Know You From Somewhere* was made on a relatively small budget of seventy thousand dollars - funded entirely by Fitzgerald.

"So what I do is just I'll be on a show editing for six months just saving every single penny," says Fitzgerald, "And then I'll have a time or time off in between shows to put all that money into my own work."

Andrew Fitzgerald and Dean Nick Burns during the film's Q&A session.





Keanu Peters sinks a shot.

Photo by Michael O'Donnell

Dean Steed

Staff Writer

Salt Lake Community College Bruin women play a nail biter of a game keeping everyone on the edge of their seat, in a close game resulting in a score of 56-50 win, at home Saturday taking down Snow College to remain undefeated in conference play.

SLCC had a slow start in the first quarter with their offense scoring only 8 points; they held Snow to 11 points to keep it close. In the second quarter, SLCC came out strong leaving their scoring woes behind to outscore Snow 19 points to 14 with a Rain Rawlings clutch three-pointer, just seconds before halftime giving SLCC the lead 27-25. In the second half, Snow turned up the defense holding SLCC to only 9 points in the third quarter, allowing Snow to regain the lead in the forth. With a boost off the bench, courtesy of Olivia Elliss hitting some key shots down the stretch, coupled with her rebounding, Ebony Norman drained a curtail three to give SLCC a 50-45 lead. With Karina Brandon scoring a total of 15 points helped to push SLCC past Snow for a 56-50 victory. The NO. 7 Bruin women are now 5-0 in conference play and 17-2 overall.

Happy with the win Head Coach Specketer stated, "We have thing to improve on. We need to execute better in the halfcourt and take care of the ball." Looking forward, she mentioned, "This was a good game we can learn from. We play Snow two more times and they have improved since our last meeting." In that game SLCC won 71-47; dominating Snow. Coach Specketer said, "One key to the win was Ebony Norman defending the point, slowing them down, and creating turnovers." Norman caused several turnovers in the game including one late in the fourth to help capture the win for the Bruins.

Karina Brandon scored 15 off 6 of 8 shooting. Olivia Eliss had 6 rebounds, tying a team high, and scored 8 points on 4 of 5 shooting. Ebony Norman had a great defensive game and scored 8 points shooting 3 of 8. Tia Hay and Sica Cuzic combined for 15 points with Annie Brady contributing 7 points off 3 of 4 shooting.

The Bruins travel to Twin Falls, Idaho to take one Southern Idaho on Tuesday, January 24th game time will be 5:30 p.m. SLCC will have to play a sound game to get past Southern Idaho who sets currently in second place in the conference with a record of 4-2 and 13-7 overall. Its sure to be a great game!

BRUINS

BASH

BADGERS

Michael O'Donnell

Contributing Writer

Salt Lake Community College's instate rivals, the Snow College Badgers, stormed into the Bruins arena for a match-up of the two top teams in Southwestern Athletic Conference play. The Badgers were 5-0 in conference play, and narrowly won at home against the Bruins earlier in the month. Though since their last meeting, the Bruins have put together two impressive wins in conference play, as well as a win in their SWAC home opener against College of Southern Idaho, who were ranked no. 15 in the National Junior College Athletic Association polls.

The Bruins were focused right from the start, led by Ke'Sean Davis with a pair of big dunks, as well as talented forward Christian Gray, who was named SWAC player of the week. The Bruins' athleticism and height made it impossible for the Badgers to get any good looks from behind the 3-point line, leading to an early lead favoring the Bruins. The Badgers fought hard and were only two points behind with only six minutes left in the first half, but the Bruins pushed back just as hard, earning a nine-point lead. Ke'Sean Davis ended the first half with 15 points, and Dalven Brushier chipped in with 5-points to end the half.

The second half was more of the same for the Badgers, they couldn't put a rock in the ocean. The game never went under a 10-point lead in favor of the Bruins. The Bruins easily capitalized on long misses by the Badgers, leading to a series of fast breaks. Ke'Sean Davis was particularly impressive, leading the board with 24-points, eight rebounds and was 8-11 from the field. Christian Gray put together another outstanding game as well, with a stat line of 15-points, nine rebounds, six assists and two steals. Cooper Holt, the "rifleman," finished with 12-points and eight rebounds after getting the starting ball. Dalven Brushier finished with 12-points and nine rebounds. The Bruins were impressive on the boards with 47 rebounds.

The Lady Bruins line up for a free throw during their game against The Badgers.

Photo by Dean Steed





Students' basic needs met at Bruin Cupboard

Dean Steed

Contributing Writer

The high cost of education can make it difficult to cover basic necessities like food. The student volunteer Bruin Pantry is a place where students can go to receive help.

Located in room 2-152 of the South City Campus, the pantry is open Mondays from 11 a.m. to 2 p.m., Wednesdays from 1p.m. to 4 p.m., Thursdays and Fridays from 9 a.m. to 4 p.m. With more volunteers in the pantry, additional hours are expected to be added.

The pantry carries mostly nonperishables such as canned food, chips, crackers, juice, peanut butter, jams, honey, soups of all kinds, and occasionally fresh fruit. They also have your basic toiletries and feminine hygiene products along with diapers and baby food.

“Starting February they will be taking donations of hygiene products to make hygiene kits that will be available the second week of March at the pantry,” says pantry coordinator, Heather Murray.

The Bruin Pantry is always seeking volunteers. From collecting and stocking food to manning the pantry. The pantry is flexible and let’s student’s set the volunteer times.

Donations are taking directly at the pantry. If no one is at the pantry, donations are placed in the black tub outside the door of the pantry. Additional drop-off locations can be found at the information desk. The pantry can use all the donations they can get as they only receive one food delivery a month from the food bank to cover all SLCC campuses.

“We get a lot of canned vegetables and soups but we really need more protein donations as well as things like macaroni and cheese and even toiletries. But really, anything helps” says Murray.

The most needed items are canned tuna or chicken, juice, macaroni and cheese, peanut butter, cereals and snacks like granola bars, nuts, and dried fruit and any hygiene products.

Students are welcome to shop for two grocery bags full of food twice a month. If you are interested in volunteering you can email Bruincampuspantry@gmail.com or Heatherleannmurray@gmail.com



Call for entries

Entry Forms are available:
Taylorsville Redwood Campus- STC 124 and STC 236
Deadline: **Monday, February 6 by 3:00 pm**

Prizes: (1st place \$300. 2nd place \$200, 3rd place \$100)

All types of art work welcome

Questions 801-957-3440 or 801-957-3880
email: doctor.ayeliya@slcc.edu or Laurel.fortun@slcc.edu

1875

MAKE YOUR NEXT MOVE YOUR BEST MOVE.



**WESTMINSTER
COLLEGE**

About 30 percent of our entering undergraduates are transfer students, so you'll be part of our campus community right from the start. Join us for our Transfer Student Night on February 15, 6–8:00 PM.

801.832.2200 | WESTMINSTERCOLLEGE.EDU/VISIT