

THE GLOBE



STUDENT VOICES AND VIEWS FOR THE SLCC COMMUNITY

No Zero

Johnson aims high, Pg. 4

Watchtower Cafe

New cafe across from South City Campus, Pg. 6

The Finest Hours

Review on Disney's new feature film, Pg. 5

Alternative means of **transportation** from campus to campus

Scott Ditto

Staff Writer

Salt Lake Community College offers students both shuttle service, the B-Line, and discounted UTA passes year round as a way to help it's students commute to and from the various campuses.

For students with classes at multiple campuses, the B-Line shuttles can be found at South City, Meadowbrook, Taylorsville Redwood, Jordan and Miller. The B-line is free to students who present their OneCard upon boarding.

The shuttle can be found at South City and Miller campuses on every hour, Meadowbrook and Jordan campuses every quarter hour, and the Taylorsville campus every half hour. Students may need to plan accordingly to make classes on time located at other campuses.

Students can download the Ride Systems app to view a live map of the shuttle locations and how long until they arrive at each location.

In addition to the B-Line, SLCC students are eligible to purchase discounted UTA student passes, giving access to UTA buses and TRAX lines.

The discounted cost to students varies depending on each pass type and is prorated for each time period the pass is valid for the semester. Frontrunner passes are not included, but are available at additional cost.

Students who are currently enrolled can purchase discounted UTA passes through the UTA website using their student ID number.

Bus stops are located throughout Salt Lake County, Utah County, and Summit County while TRAX stations are located from Draper to Salt Lake City.

SLCC knows that as a commuter school, not every student can or wants to drive to every campus

So if students cannot find a carpool or want to save some of that precious gas, log on to SLCC.edu and find out more departure times and locations for the B-Line and UTA.

For those who love the convenience of driving themselves too much to give it up, SLCC also offers student parking permits.



Photo by Ashley Frias

Cars are parked at South City campus using parking meters.



Photo by Ashley Frias

For students who enjoy driving, SLCC offers student parking permits.



"Be Prepared" CERT is part of #lifeatslcc @masscommcenter at #Miller

**Show us
#lifeatslcc
through the
eyes of
your camera.**



"Football" Bruin's Sports club #lifeatslcc @masscommcenter at #TaylorsvilleRedwood

**Get your work published
in the Globe & other prizes.**

In the caption of your photo include @masscommcenter #lifeatslcc and hashtag of your campus(#SouthCity, #TaylorsvilleRedwood etc.) or email contest.globe@slcc.edu

Life@slcc

Instagram

Contest



"Art on campus" #lifeatslcc @masscommcenter at #Jordan



"Childcare" #lifeatslcc @masscommcenter at #SouthCity

Tuition waivers gifted to outstanding student **ePortfolio** work

Marc Hanson

Assistant Editor

The General Education ePortfolio can be a controversial topic among students attending Salt Lake Community College, as the general sentiment runs anywhere from ambivalence to outright disdain for this academic requirement.

However, this week, four students proved that the ePortfolio can pay off in more ways than one at the 6th Annual SLCC ePortfolio Showcase.

Student built ePortfolios act as an archive of academic achievement and a way to measure one's progress.

Professors will often look at them when considering a letter of recommendation.

A well put together ePortfolio can also serve to set a resume apart for potential employers. It is a work of self reflection and becomes more robust with each new experience.

"The interesting thing about an ePortfolio is that it spends it's entire life under construction," says David Hubert, Interim Provost of Learning Advancement.

"Each portfolio evolves as its owner has new experiences."

The purpose of the award is to recognize students who went above and beyond in their learning.

A result of this hard work is something students can reflect and build on, ultimately, transcending a high GPA.

"Without this, our grades and everything we are, just ends as a transcript," says Jesus Gomez, SLCC student winner of the ePortfolio Showcase. "With an ePortfolio we let others see what we actually went through."

Managing an ePortfolio is an intensely reflective process which helps develop self awareness.

Students have the opportunity to share what they do outside the classroom, and some of those activities are not fully realized until filtered through the prism of



Winners at the ePortfolio showcase received a framed certificate of recognition and a full spring tuition waiver.

academia.

"I love baking and cooking, but I had no idea until I started my Introduction to Writing class that I would enjoy doing it so much," says Showcase winner, Luciano Salmi. "I think my husband enjoys it a lot too -- he's always asking for more."

The 6th Annual SLCC ePortfolio showcase winners are Materials Science and Engineering major Jesus Gomez, Sociology major Vanessa Aldana, Nursing major Jason Warhurst, and Psychology major Luciana Salmi.

Each student received a framed certificate of recognition and a full spring tuition waiver.

More importantly, these students walked away with a tangible representation of how far they have come, where they are now, and solid path towards the future.



The Week

of Love Giveaway

BECAUSE ONE DAY OF LOVE JUST ISN'T ENOUGH
WIN PRIZES EVERY WEEKDAY FEB. 8 - FEB. 12

Follow us  [facebook.com/slccsmc](https://www.facebook.com/slccsmc) for how to win!

Quick Wits tickets

The Last Five Years Tickets

The Pie gift cards

U of U gymnastics & basketball tickets

Grand Prize: dinner & a movie prize pack



Bruin men's basketball forward **Gibson Johnson** is no zero

Guadalupe Rodriguez

Photographer

Gibson Johnson, Starting Forward for the SLCC Bruins Basketball Team and major in Business Administration, recently spoke to The Globe about the number on his jersey, or rather the lack of a number, seeing as how there is a big zero printed on his chest.

"I was a walk on at the University of Utah, as I was recruited by the coach there, and when he transferred to SLCC I transferred with him," said Johnson, who averages thirteen points and just over seven rebounds per game.

"When I came here, I didn't want to step on any toes or push any buttons, because I just happened to be playing basketball. So, this is the number, zero, I was given. I thought it was a lame number, but I grew to like it," Johnson continues.

"In the NBA, there is this guy, Gilbert Arenas, who chose the number zero too. He believed that was how many people believed he should be in the NBA, and he went on to become an All-Star.



Johnson in action.

So, it's kind of the same situation, I have the same number zero, and nobody thought I would be playing college basketball, but here I am!

It's almost like a beacon. You see the zero, and everyone associates Gibson with that number," says Rachel Rowan, Director of Media Relations for the Athletic Department, on the subject of Johnson's non-number.

Johnson loves his team and when asked about sitting on the bench, he laughs, saying

"Everyone needs to sit on the bench, especially me. I have been a starter for a while, which has been really good.

But when you can't go any longer, we have a really good team, so, it's not that big of a drop off when you take any person out of a game."

Johnson has a few schools that are expressing interest in him after he graduates this year.

Of the recruitment process, Johnson says, "It's a lot of fun getting to know the other coaches."



Johnson sits courtside at the TRC.

There are quite a few scouting Johnson, but the University of San Diego, University of Seattle, and UC Santa Barbara are among some of the colleges he has considered.

The final date to make his decision will be April 14th. However, this coming Thursday, February 4th, one of the biggest games of the year will be held at SLCC, pitting SLCC against North Idaho, who are ranked 16th and 3rd, respectively, and the game begins at 7:30 p.m.



Johnson sports the number zero on his jersey.



Johnson is studying business administration at SLCC when he is not found playing on the basketball court.

Disney's new feature "The Finest Hours" based on true story

Court Casselman

Contributing Writer

Romance has never been a strong suit of the disaster genre. Films continue to miss the mark on how to create a meaningful and relatable love story in the midst of chaos. While Disney's new feature, *The Finest Hours*, is based on a true relationship, it struggles with this same issue despite being an intense and enjoyable disaster movie.

The Finest Hours is based on the true story of Coast Guard hero, Bernie Webber, portrayed by Chris Pine (Star Trek).

After an oil tanker is ripped in half by a storm, Webber puts aside his recent engagement to his sweetheart, Miriam, played by Holliday Grainger (Cinderella), to risk his own life to save the lives of the stranded crew.

This movie gives the impression of being two separate films that have been haphazardly spliced together; a boring romance and an entertaining and intense disaster flick.

The tonal shift between these two 'movies' is shockingly harsh. Every time the film transitions back to land, director Craig Gillespie (*The Million Dollar Arm*) slams the brakes on the action for something far less enjoyable.

The film starts out slow, focusing on the relationship between Pine and Grainger, which is a shame because neither are particularly invested or comfortable in their roles. Their romance is unconvincing, standing as the film's major issue.

Simple mutual attraction isn't enough to show that two characters are in love.



Photo courtesy of Disney

"The Finest Hours" is based on the true story of Coast Guard hero, Bernie Webber.



Photo courtesy of Disney

"The Finest Hours" engine room bringing the story of the SS Pendleton to life.

The Finest Hours isn't willing to set aside the screen time needed to establish a relationship.

The love story between the leads lies in an awkward position. On the one hand, the weak romance lacks the necessary time to build depth and character.

On the other, it takes up far too much of the film, ultimately distracting from where the film truly shines; the disaster itself.

The scenes that take place on the salvaged tanker are thrilling and terrifying. These are the moments where Casey Affleck (*Interstellar*) steals the show, bringing a fantastic performance as the tanker's engineer.

He delivers his lines with such conviction, helping build the sense of desperation that surrounds the few remaining crew members as they fight for survival.

Even Chris Pine becomes more comfortable in his role the moment he sails out to rescue the stranded survivors.

So much prevents this intense movie from reaching the level of greatness it so desperately claws for.

The uninteresting romance and the constant, jarring shift of tone hinders some truly spectacular, well directed moments that take place on the raging sea.

Yet, no matter how many problems arise, when this disaster film is an actual disaster film, it truly is impressive.

Director: Craig Gillespie

Starring: Chris Pine, Holliday Grainger, and Casey Affleck

Running Time: 117 Minutes

Rating: PG-13

Release Date: January 29th, 2016

Learn TV production

Communication 2200 — Beginning TV Production
Students will learn to shoot and edit high-definition video using industry-standard production equipment. Great introduction to multimedia production that can be used in every area of study. No prerequisites. No experience needed. Any major.

Communication 2310 — SLCC Student TV News Production
This intermediate TV production course teaches TV journalism, TV News production in the studio and the field. Students produce a weekly live TV news show. Students can take the class as on-camera talent; or as TV studio and camera crew.

Communication 2510 -- Documentary Film Production
This advanced production class gives students the opportunity to create high-end documentary projects. While studying documentary film theory, each student creates and produces his or her own documentary film project.

©Sharon Crown 2014

For more information contact Professor Smith at tyler.smith@slcc.edu or call 801-957-3475

WATCHTOWER CAFE SERVES AS OFF CAMPUS STUDENT GETAWAY

Jennifer Gardiner
Staff Writer

SALT LAKE CITY, Utah - Jan. 22, 2016 --The new Watchtower Cafe sits perfectly across the street from the SLCC South City campus at 1588 S. State St. and is a great way to mingle with friends, play games, grab a cup of coffee, read a book, or just relax.

Cori Hoekestra, co-owner of the Watchtower Café, said they chose the name as a reference to the space station where the Justice League looks over Earth in the DC Comics universe, which seemed fitting.

“Many of the customers that come to the cafe were prior customers of the Coffee Connection, which used to occupy this same space.

People are just starting to see the changes and business has been pretty good,” Hoekestra said. “We did however notice it was a little difficult for students to know we are here because so many enter from the back of the school.”

Keona Jones, a student at SLCC, said he goes to the cafe about once a week.

“I think this coffee shop is different than other cafes, because they know me and it’s a really calm environment, where as far as I can tell, not a lot of pretentious people come.”

Jones said.

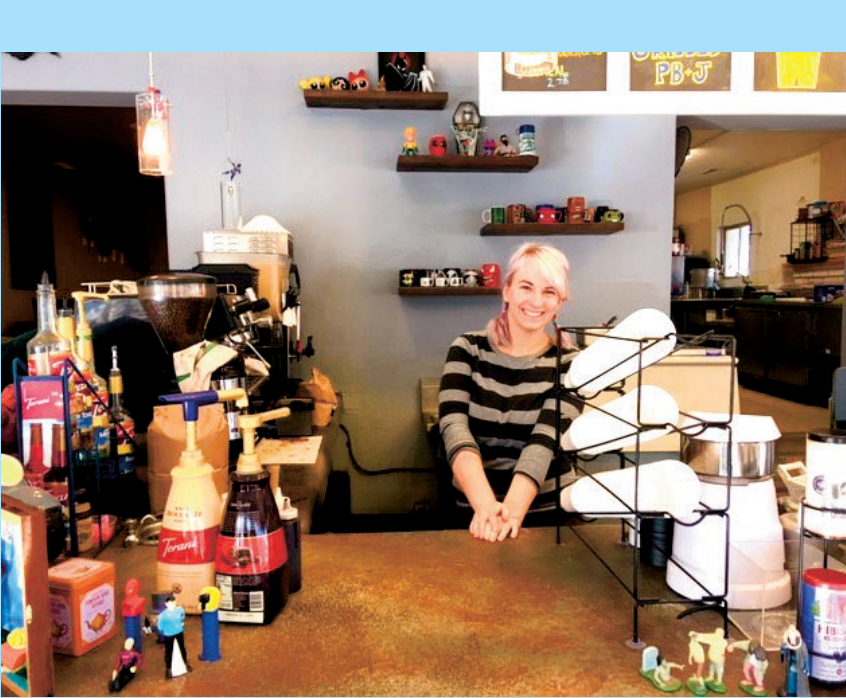
Amelia Harward, another SLCC student, said that she really likes all the comics and all the art along the walls. “We really like the ability to sit on the couches too,” Harward said. “Their drinks are really good and I love the hand crafted sodas.”

Hoekestra said her and Mike Tuiasoa, the second owner, actually met over their love of comic books and pop culture.

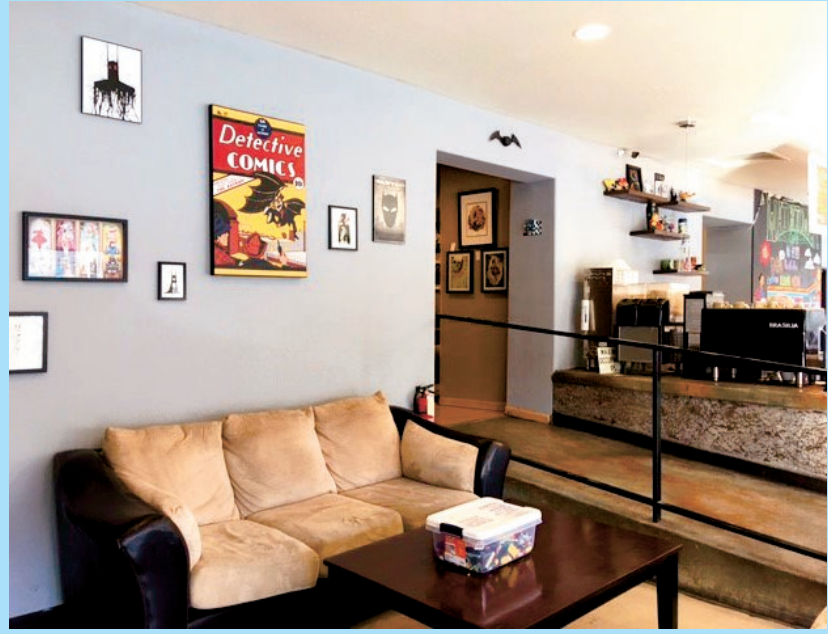
“We both love Star Wars and other similar things,” Hoekestra said. “But we both realized that you can go to a comic book store and buy your issues, but have nowhere to just hang out and read them.”

The Watchtower Cafe also offers a variety of food options such as burritos and grilled cheese sandwiches as well as a breakfast menu consisting of pastries, bagels, and quiche. SLCC students also get a 10% discount when they show their student ID.

The Watchtower Café is open from 7:30 a.m. to 8 p.m. Monday to Thursday, 7:30 a.m. to 10 p.m. Friday, 8 a.m. to 10 p.m. Saturday and 8 a.m to 9 p.m. on Sunday.



Co-owner of Watchtower Cafe, Cori Hoekestra, serves patron at cafe.



Photos by Jennifer Gardiner

Twin sisters prove chemistry on court is essential to team sports

Scott Funk

Contributing Writer

Chemistry between players on any team sport is essential. Where there is a lack of chemistry, there is a lack of success. Look back at some of the best sports duos in history: Stockton and Malone, Jordan and Pippen, Montana and Rice, and of course today's The Splash Brothers, Curry and Thompson.

All of these duos provide a dominating factor in their team's success.

Every coach focuses a lot of time working on ways to create chemistry within their team. Coaches strive to create the kind of chemistry where players can anticipate a teammate's intent without even looking at them. For Salt Lake Community College Women's Basketball coach Betsy Specketer, this has become a reality.

Monique and Dominique Mills have been playing sports with each other since they were children. Because of this, they already have that chemistry that a coach is looking for.

However, they have something that gives them a

unique chemistry that can't be taught. Not only are they sisters, they are twins.

Their chemistry is to the point that they don't need to speak to each other, and all it takes for them to understand each other is their body language.

This gives them an advantage not only on offense, but on defense as well.

"I always know where she's at on the court when we do play together...it comes naturally," says Monique. "I can tell the way her body is from the back, what she is thinking. We just know."

Putting them at the top of a 2-3 zone, they can terrorize any offense. Offensively, they can pick apart any defense. Snow College got a taste of the twins in the Bruins' last home game on Jan. 23.

In a quick transition of plays, the Mills sisters had two steals and four points in less than 15 seconds. Snow College wasn't the first team to experience their teamwork.

Their father Silas Mills, who is also one of the Assistant Coaches for the men's basketball team at SLCC, noticed they had a special talent for basketball early on when he was playing professionally overseas.

"Over in France one of my coaches had two sons," says Silas. "They weren't twins, same age as the girls. And the girls used to kick their butt! All the time! And it was like...Wow! They kept winning!"

They continued to win in a convincing manner. Monique and Dominique, in their senior year at Juan Diego Catholic High School, led their team to an undefeated season and a state championship.

Their knack for winning continued into their college career, helping SLCC start the season 18-0 until they suffered their first loss to College of Southern Idaho on Jan. 7, which ended the twins' 43 game win streak.

But what may be more impressive than their chemistry together, is their humility after they lost.

"You win some you lose some," says Dominique. "You learn from your losses. I learned that we need to become more of a team."

Before their recent loss to CSI, the Bruins were ranked #1 with a win/loss of 18-0. Still, both Dominique and Monique knew there was room for improvement for everyone.

"Know your role" says Dominique.

Clearly everyone made the effort to know her individual role better. After their loss, the Bruins came out firing.

Their next four games they dismantled their opponents, winning by an average of 22 points.

Monique and Dominique will continue to help lead their team to success with their unique chemistry.

The chemistry between them on the court is rare. More than that, it's unexplainable.

"It comes naturally," says Monique.

To see the twins and this unique chemistry in action, check out their schedule at slccbruins.com.



SLCC Ladies Basketball team including the Mills twin sisters.



Twin sisters Monique and Dominique Mills play basketball for SLCC Bruins.

Men's basketball team ranked #16 in nation

Patrick Jared Gibb

Contributing Writer

The Bruins Men's Basketball team is not going to let anyone stop their journey to a national championship. The Bruins are ranked #16 in the nation for junior colleges. Their overall record is 19-3, with a conference record of 6-1.

The Bruins need a large fan turnout at the games now more than ever. The last two home games will be played this week. After their final 2-game home stand, they go on the road for the rest of the season. This Thursday they face the biggest challenge they've had all season, hosting #2 in the nation, Northern Idaho.

They are lead by Head Coach Todd Phillips, who has been with the team for five years, and Assistant Coach Silas Mills, who is recognized as helping the Bruins earn the first banner raised up in the Bruin gym. Mills brings tremendous experience to the team as he went from playing in a junior college league for SLCC in 1994, to winning a Big West Championship at Utah State during his tenure there from 1994-96. Silas also played 14 seasons in Europe, eventually earning a 10-day contract in the NBA where he played for the Seattle Supersonics alongside future Basketball Hall-of-Famer, Ray Allen. Coach Phillips, Coach Silas, and their players are excited for the upcoming challenge of achieving their goals they've established before the season by winning the national championship.

"[We want] to win the league, and do great at nationals," says Coach Phillips, "It's a battle every year."

Sophomore Forward Marcus White responded, "[Our] goals as a team [are to] win the SWAC conference and win the national championship."

Point guard Austin Waddoups declared the same ambitious approach to their team's goals.

"Win the regular season championship, win the conference tournament, go to Kansas, and play in the national championship game," says Waddoups

The Bruins, sitting at #16, have many strengths and weaknesses as they go along their journey to hopefully play in the national championship.

"[Our] strengths: a lot of guys are really talented, [and] great team chemistry," says White.

Waddoups understands that his job as Point Guard is pivotal to the team's success. He believes that "Getting his teammates shots, scoring, and creating plays for others" is a major strength to the team.

The Bruins, however, need to work on their weaknesses if they want to go far. Coach Phillips admitted that the team needs more of a killer instinct.

"When we have a team on the ropes, we need to finish them off by 10 points," says Phillips.

The basketball season is a grind and can be at times, difficult to maintain concentration and motivation.

Coach Phillips admits that the team works very hard collectively to produce wins and keep motivated.



Photo by Stephen Speckman

SLCC's men's basketball team.

"We have good team chemistry [and] great kids. [We try] to get better every day so [we] can be on point at the end of the season," says White.

One thing is for sure, if the Bruins play these coming weeks the way they do during practice, they'll have a good chance to reach their goals this season.

"Keep playing hard, follow the game plan, play as a team, and [don't] play selfish," says Waddoups

The cost to attend the games are as follows: Students are free when presenting a Student OneCard, Senior Citizens are \$3, adults and children pay \$5. You can catch the last Men's Bruins home games this Thursday at 7:00 p.m., and this Saturday at 5:00 p.m. Come support your own as the Bruin's road to success comes to an end.

THE GLOBE



WANTS YOU

SLCC'S STUDENT NEWSPAPER HAS OPENINGS FOR

STAFF WRITERS

EARN EXTRA MONEY WHILE BUILDING YOUR PORTFOLIO

APPLY TODAY!

WWW.GLOBESLCC.COM/JOBS
801-957-3471
ALISON.ARNDT@SLCC.EDU

ARE YOU IN A METHADONE MAINTENANCE THERAPY PROGRAM?



If you're in a methadone maintenance therapy program, PRA Health Sciences in Salt Lake City wants to talk to you about participating in a clinical research study. To qualify for this study, you should be a male or female in good health, between ages 18 and 65, and have a body mass index (BMI) between 18 and 35. Those who smoke 10 or less cigarettes per day will be considered for the study. Females should not be pregnant or about to become pregnant.

If you qualify for this study, you could be compensated up to \$1,950 for time and travel.

To learn more, call PRA Health Sciences today at (801)269-8200 or visit Volunteers.prahs.com.



PRA Health Sciences
(Formerly known as Lifetree Clinical Research)

Volunteers.prahs.com • 801-269-8200

Letter to the Editor: Students aren't looking for a free handout

Djinni Yancey

SLCC Student

In her article from January 21, 2016 "Mia Love talks politics at two SLCC campuses," Tamara Brune-Wharton states that Mia Love says students should pay for school by paying for it themselves, instead of relying on assistance from the government, such as The Pell Grant.

As a student using a Pell Grant to pay for school, I am concerned Love assumes that all students receiving Pell Grant assistance are just looking for a free handout. Students like myself have unfortunate situations that are out of our control and the only way to break the poverty cycle is to go to college and give back to society by contributing as we volunteer through our service learning and finally when we graduate, contributing again as a tax-payer making a decent living.

According to the Henry J. Kaiser foundation, "1 in 3 Americans report having difficulty paying their medical bills." I am one of those Americans who refinanced a house to pay for extremely high medical debt, due to a child being born with a serious heart condition requiring two heart surgeries during his first year of life.

Politicians like Mia Love need to understand that many Americans struggle to get out of poverty, and how Americans like myself can contribute to the economy.



SPRING HOUSING APPLICATIONS AVAILABLE NOW!

Experience the convenience, community and all the U has to offer by living on campus. For more information and to apply, visit www.housing.utah.edu

Priority application date: November 15

info@housing.utah.edu | 801-587-2002

SCENES FROM SUNDANCE

PHOTOS BY TAMARA BRUNE-WHARTON

